

HECELLOSE™ B (Hydroxy Ethyl Cellulose) Bio-stable grade

Product Description

HECELLOSE™ B is a nonionic, water-soluble polymer from wood pulps or cotton linters that can be used for rheological modifier in water-based paints.

HECELLOSE™ B has excellent bio-stability in solution against enzymatic attack. It provides good pseudoplastic flow and wide compatibility with colored pigments, emulsion polymers, surfactants, emulsifiers, defoamers, and preservatives.

In order to avoid lump formations caused by a quicker than optimal dissolution rate, **HECELLOSE™** is properly treated to achieve optimum hydration time for the application.



Performance

- Bio-stability
- Rheology modifiers
- Excellent Color Acceptance
- Viscosity Stability
- Water Retention
- Pseudoplasticity

Typical properties

Appearance			Off-white powder
Moisture content (%)			5 max.
pH			6.0~8.5
Solution Viscosity (25 °C, mPa·s)	1%	SBHV	4,800~6,000
		B100K	3,500~5,000
		B50K	2,500~3,500
		B30K	1,500~2,500
		B15K	1,000~1,500
	2%	B4K	4,500~6,500

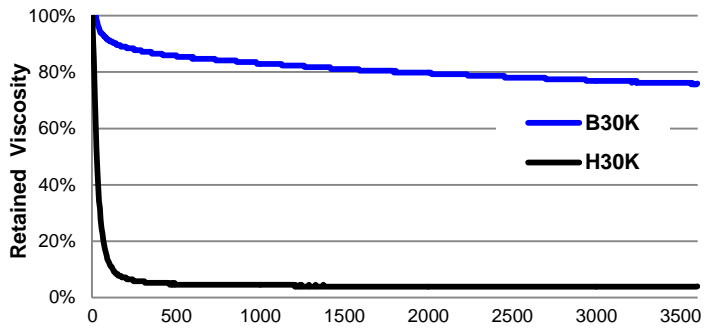
Product Selection Guide

Properties	HECELLOSE™ B					
	SBHV	B100K	B50K	B30K	B15K	B4K
Viscosity	High	←				Low
Thickening efficiency	High	←				Low
Anti-spatter	Low	→				High
Leveling	Low	→				High
Sag resistance	Low	→				High



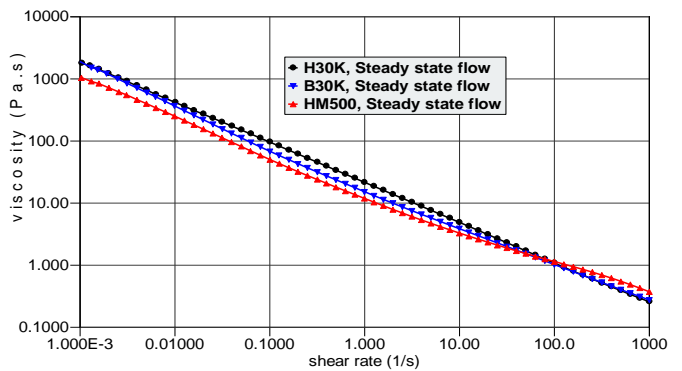
Bio-stability

HECELLOSE™ B grades are equipped with an excellent anti-biodegradability that helps to block the attacks of enzymes in solution.

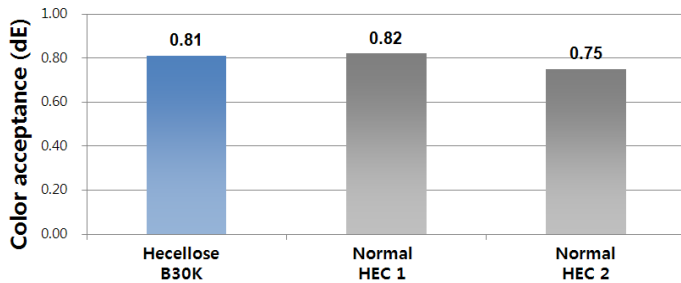


Viscosity vs. Shear rate in Latex Paint

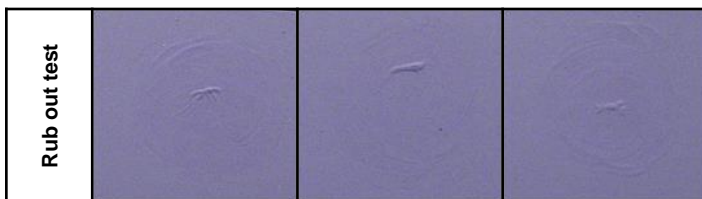
HECELLOSE™ H, B, HM grades show different viscosity profiles in water based latex paints. It provide desired properties for latex paints which have various kinds of formulations.



Color Acceptance



HECELLOSE™ B shows excellent color acceptance and compatibilities with color pigments and latex emulsion. It provides excellent pigment distribution and stability of colorant.



Contacts

<http://www.lotte-cellulose.com>

Green Material Sales Department

+82-2-6974-4811 soonkuk@lottechem.com

+82-2-6974-4812 sean@lottechem.com

Office in Europe

+49-6196-66-6100 imhan@lottechem.com

+49-6196-66-6101 sohyung.lee@lottechem.com

Green Material R&D Center

+82-52-270-6701

+82-52-270-6703

+82-52-270-6714

Shanghai Branch China

+86-216-270-393-6122

choi@lottechem.com

gyujong@lottechem.com

seong78jung@lottechem.com

l.qi@lottechem.com

All statements, information and data presented herein are believed to be accurate and reliable, but are not to be taken as a guarantee, an express or implied, for which Lotte Fine Chemical, Inc. and its subsidiaries assume legal responsibility.