

WHAT'S NEW?

THE VEGAN EDITION



INSIDE THIS EDITION...

Clearthix S

Ocean-friendly alternative to carbomer gels

Bergacare Smart Lipids Ceramide

Smart delivery of Ceramide to boost the skin barrier

Glycoin® natural

Nature's survival strategy for stressed skin

Collaplant Z NPNF

Vegetable alternative to collagen

Bentone Gel® rheology modifier

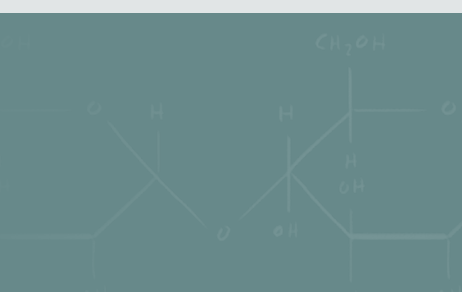
Clay-based rheology modifiers deliver clean, green promise

Cellfie from Chemyunion

New plant-based skin filler with exceptional performance in skin topical treatments.

GreenWax™

Natural, high-performance anionic emulsifying blends





BERGACARE SMART LIPIDS CERAMIDE

Smart delivery of Ceramide to boost the skin barrier

Berg + Schmidt have launched **Bergacare SmartLipids Ceramide**, a new active which delivers enhanced penetration of ceramide with controlled and prolonged release.

This combination of ceramides, phytosterols and fatty acids mimics the natural composition of the skin's barrier.

Due to their submicron size, BergaCare SmartLipids adhere well to the skin, reinforcing the skin barrier through their active ingredient depot and through the lipid matrix itself.

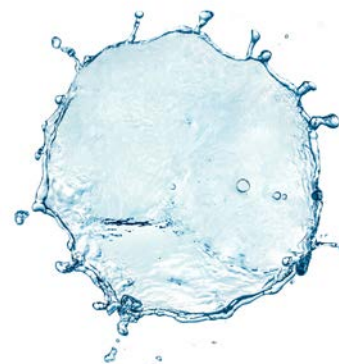
INCI: AQUA & CAPRYLIC/CAPRIC TRIGLYCERIDE & CERAMIDE NP & SODIUM CETEARYL SULFATE & CERAMIDE AP & PHYTOSTEROLS & PENTYLENE GLYCOL & SUNFLOWER SEED ACID & STEARIC ACID & BEHENIC ACID & OLEIC ACID & PALMITIC ACID

FORMULATION:

CERAMIDE 2ND SKIN TONIC

Your first line of defence after cleansing! Contains BergaCare SmartLipids Ceramide to strengthen the skin barrier and act as a shield against external aggressions.

BergaCare FG Olive acts as a light emollient for a smooth, silky, and cared-for skin feel.



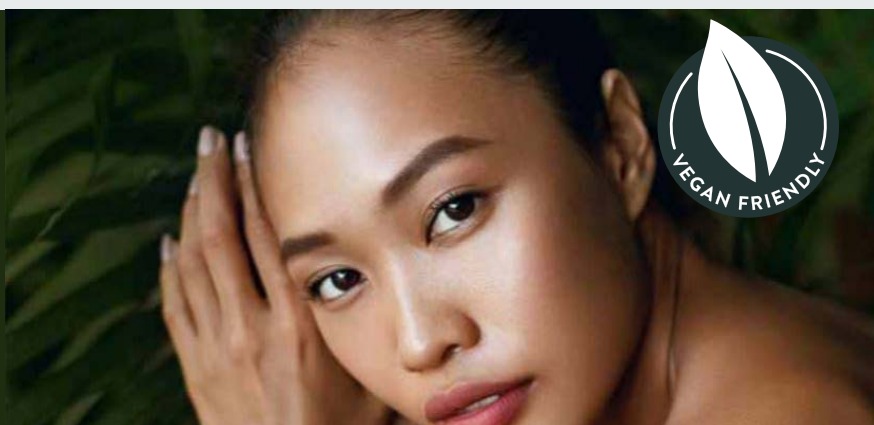
ASK US FOR A SAMPLE

Phase	Ingredient	% w/w
A	Water	up to 100.00
	Glycerin	3.00
	Hydroxyethylcellulose	0.25
	Gellan Gum	0.025
B	Bergacare SmartLipids Ceramide (Berg + Schmidt)	2.00
	Aloe Barbadensis Leaf Juice Powder	0.10
	Aqua, Propylene Glycol & Rosmarinus Officinalis Extract	0.10
	Pentylene Glycol	2.00
	Glyceryl Glucoside, Glycerin & Aqua	1.50
	BergaCare FG Olive (Berg + Schmidt)	2.00
	Polyglyceryl-10 Laurate, Aqua & Citric Acid	2.00
	Panthenol	0.20
C	Sodium Hydroxide	to adjust pH
	Preservative/Fragrance	q.s.

Contact us for samples, product information and technical assistance

COLLAPLANT Z NPNF®

Vegetable alternative
to collagen



CollaPlant Z NPNF® from TRI-K Industries is a new plant-derived alternative to traditional collagen which delivers excellent protection, moisturisation and smoothing for anti-aging skincare. It contains a synergistic blend of key proteins with a comparable amino acid composition and sensory profile to traditional hydrolysed collagen. It is suitable for both skincare and haircare applications, and is derived from sustainable plant sources.

- Fortifies skin barrier for maximum protection
- Improves skin moisturisation
- Smooths & rejuvenates for younger looking skin

INCI: HYDROLYZED SOY PROTEIN & RICE AMINO ACIDS
& HYDROLYZED ADANSONIA DIGITATA SEED EXTRACT
& L-PROLINE

FORMULATIONS:

GOOD MORNING! MOISTURISER

*Luxurious day cream with vegan collagen
for smoother and rejuvenated skin.*



Phase	Ingredient	% w/w
A	Water	78.69
	Xanthan Gum	0.20
	Glycerin	3.00
	Tetrasodium Glutamate Diacetate	0.10
B	Sodium Acrylate/Sodium Acryloyl Dimethyl Taurate Copolymer & Cetyl Alcohol & Glycol Stearate & Glyceryl Stearate & Caprylic/ Capric Triglyceride	3.00
	Oleaclear Olive Squalane	2.00
	Fision® EcoSil (TRI-K Industries)	3.00
	Isopropyl Myristate	2.50
	Caprylic/Capric Triglycerides	2.00
	Tocopherol Acetate	0.20
	C	CollaPlant Z NPNF® (TRI-K Industries)
Hyaluronic Acid Solution		2.00
Galguard Trident (Phenoxyethanol & Undecylenoyl Glycine & Capryloyl Glycine)		1.20
Colour		0.10
Eucalyptus Essential Oil		0.01

UNDER EYE-CONIC GEL

*A light eye gel packed full of moisturising
actives to care for the delicate skin.*



Phase	Ingredient	% w/w
A	Water	87.85
	Carbomer	0.40
	Glycerin	2.00
	Ammonium Acryloyldimethyltaurate/ VP Copolymer	1.25
	Tetrasodium Glutamate Diacetate	0.10
B	CollaPlant Z NPNF® (TRI-K Industries)	2.00
	Fision Hydrate (TRI-K Industries)	2.00
	NaturePep™ Quinoa (TRI-K Industries)	2.00
	TRlstat PCG (TRI-K Industries)	1.00
C	Mica and Titanium Dioxide	0.50
	Colorante- Naturel	0.20
	Sodium Hydroxide	0.70

ASK US FOR A SAMPLE

CELLFIE FROM CHEMYUNION

New plant-based skin filler with exceptional performance in skin topical treatments



Cellfie from Chemyunion stimulates 5x more adiponectin, a key biological marker responsible for adipogenesis regulation, promoting a natural-looking and remarkable skin rejuvenation.

This efficient and accurate system for delivering *Thymus vulgaris* (thyme) extract acts upon adipocytes for skin and wrinkle lipo-filling stimulation through a non-invasive method. It aims to improve structural aging due to lipoatrophy or loss of adipose tissue.

- Stimulates adipogenesis (fat accumulation) or extracellular matrix by applying topical products
- Home-use cosmetics
- Results in a natural filling look

INCI: ACQUA & PROPANEDIOL & GLYCERIN & THYMUS VULGARIS EXTRACT & LECITHIN

ASK US FOR A SAMPLE



SCUTALINE FROM EXSYMOL

Fighting ZOMBIE cells to prevent Inflamm'aging



Inflamm'aging is a chronic and silent inflammation of the skin causing premature aging.

One of the contributors is the process of senescence, creating 'Zombie' cells, which can spread to neighbouring cells, causing more widespread inflammation.

EXSYMOL, the Monaco-based creator of premium skincare & bodycare actives, has launched SCUTALINE, a new active designed to limit the chronic degradation of the extracellular matrix due to the spread of 'Zombie' cells.

SCUTALINE contains a standardised amount of two polyphenols recognised in Traditional Chinese Medicine for their anti-inflammatory and antioxidant properties: wogonin and baicaleine.

INCI: SCUTELLARIA BAICALENSIS ROOT EXTRACT



SOOTHES



REPAIRS



MOISTURISES



CALMS

ASK US FOR A SAMPLE



Glycoin® natural

THE CELL ENERGIZER

FIGHTS ZOMBIE CELLS



GLYCOIN® NATURAL FROM BITOP

Extremolytes – nature's survival strategy for stressed skin

Glycoin® natural is a multifunctional anti-aging and cell-boosting active ingredient targeting tired, stressed or mature skin.

Glycoin® natural is the protective and re-activating substance present in the resurrection plant *Myrothamnus flabellifolia*, which can be found in the deserts of southern Africa. During total desiccation, Glycoin® natural protects the plant's structure from damage. When the rains come, Glycoin® natural acts as an energy-booster and activates the plant's re-greening.

Glycoin® is also found in salt tolerant blue-green algae, like the spiral shaped micro algae *Spirulina*. Just like the desert resurrection plant, blue-green algae use Glycoin® natural as a stress-protection molecule to adapt to the osmotic stress of their habitat.

INCI: GLYCERYL GLUCOSIDE

bitop's Glycoin® natural is sustainably produced by a biotechnological fermentation process and is COSMOS approved.

- Boosts cell renewal and cell function
- Re-activates and energises the power of youth in aged cells
- Stimulates growth factors, ATP and pro-collagen production
- Increases skin thickness, firmness and elasticity
- Stimulates the anti-oxidative power in aged skin cells
- 8h/all day hydration after single application
- Lifts, tightens and smooths the skin
- Reduces sunburn and skin-redness
- Promotes tissue repair

ASK US FOR A SAMPLE



CLEARTHIX S
Ocean-friendly alternative to carbomer gels



ASK US FOR A SAMPLE

Clearthix S is a specially-formulated blend of sodium alginate and cellulose gum that can be used at room temperature as a viscosity modifier or gel former. It can be used to form water-based gels as a carbomer alternative. Stable to pH, heat and alcohol; it requires no neutralisation and is easily dispersed in water.

INCI: CELLULOSE GUM & ALGIN



Clearthix S also has a fantastic synergy with low levels of Hyaluronic Acid, which allows it to form carbomer-style gels making it a really effective rheology agent for facial or body gels with Hyaluronic Acid.

FORMULATION:

HYDRATING FACIAL GEL

A moisturising gel to give skin a boost of Hyaluronic acid.

Phase	Ingredient	% w/w
A	Clearthix S (Alchemy Ingredients)	1.75
	Hydratagel G	5.00
	Water	91.95
	Allantoin USP	0.20
	Phenoxyethanol & Ethylhexylglycerin	1.00
	FD&C Blue 1 Sol 0.1%	0.05
	FD&C Yellow 5 Sol 0.1%	0.05

BENTONE GEL®

Clay-based rheology modifiers delivers clean, green promise



Elementis has launched a new **Bentone Gel® rheology modifier** for use in cyclopentasiloxane-free cosmetics.

BENTONE GEL® HS V is 97% naturally derived and designed to deliver suspension, thickening, and improved sensorial and application benefits, as well as being vegan.

To meet 'clean & green cosmetics' standards, it offers formulators easy incorporation that not only shortens process times for lower carbon footprint, but also delivers improved batch to batch consistency.

BENTONE GEL® rheology modifiers also improve stability, aesthetics and SPF of mineral-based sunscreen formulations.

BENTONE GEL® HS V is particularly suited to formulating colour cosmetics because of its ability to provide consistent colour payout in both anhydrous and emulsion systems.

FORMULATIONS:

ON THE GLOW EYESHADOW STICK

Versatile eyeshadow stick adds a swipe of colour and natural glow to your everyday look with comfortable wear and good payoff.



Phase	Ingredient	% w/w
A	C13-15 Alkane	20.00
	Bentone Gel® HS V (Elementis Specialties)	8.00
	Shorea Robusta Resin & Octyldodecanol	8.00
	Octyldodecanol	11.00
	Ceresin Wax	7.00
	Candelilla Wax	6.00
	Paraffin Wax	3.00
	Cocoa Butter	3.00
	Caprylhydroxamic Acid & Caprylyl Glycol & Glycerin	1.00
B	Mica & Titanium Dioxide & Iron Oxide	17.50
	Mica & Titanium Dioxide	2.50
	Methyl Methacrylate Crosspolymer	7.00
	Nylon-12	3.00
	Boron nitride	3.00

METEOR SHADOW

This metallic pink dreamy mousse texture eyeshadow can be easily applied for comfortable long wear, giving you that shimmering look all day long.



Phase	Ingredient	% w/w
A	C13-15 Alkane	49.80
	Bentone Gel® HS V (Elementis Specialties)	12.00
	Talc	5.00
	Boron Nitride	5.00
	Ceresin Wax	8.00
	Microcrystalline wax	4.00
	Caprylyl Glycol & Caprylhydroxamic Acid & Glycerin	0.20
B	Mica & Titanium Dioxide & Iron Oxide	10.00
	Mica & Titanium Dioxide	5.00
C	Rheoluxe® 880 (Elementis Specialties)	1.00

ALCHEMY
ingredients

100% natural functional ingredients
for emulsifying, thickening, gelling
and stabilising

www.alchemy-ingredients.com



Speciality lipids and cosmetics
actives and high-purity glycolic acid

www.berg-schmidt.de



Extremolytes for life

Natural stress protection

www.bitop.de



Active ingredients and blurring
agents for premium skincare

www.centerchem.com



Natural cosmetic active ingredients
for haircare & skincare

www.chemyunion.com



Natural sustainable yucca and
quillaja extracts

www.desertking.com



Natural active ingredients &
Bentone gel rheology modifiers

www.elementis.com



High-tech skincare actives based
on silanol & peptide technology

www.exsymol.com



Bespoke botanical extracts

www.greenlineingredients.com



Specialty formulated waxes

www.kosterkeunen.com



Specialty silicones for
Personal Care

www.innospecinc.com



Innovative natural
cosmetic ingredients

www.respharmaind.com



Effective odour eliminators

www.schillseilacher.de



A MEMBER OF THE GROUP

Active ingredients and speciality
proteins for haircare & skincare

www.tri-k.com

Contact us for samples, product information and technical assistance

T +44 (0)1344 397755

E personalcare@alfa-chemicals.co.uk

www.alfa-chemicals.co.uk

