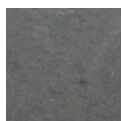


# Technical Data Sheet

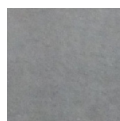
## DALLE CERAMIC TILE 60 x 60

### Description

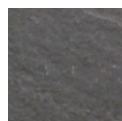
The DALLE CERAMIC tile is a monolithic coloured porcelain stoneware tile for outdoor and indoor use. It is non-slip, frost-proof, highly resistant to weight loading and to temperature fluctuations. The colour range comprises the following choices:



GREY SLATE



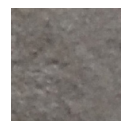
BLUE GREY SLATE\*



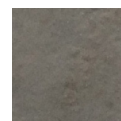
ANTHRACITE STONE



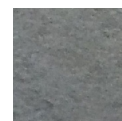
PEARL STONE



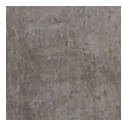
NATURAL STONE\*



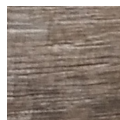
IVORY QUARTZ



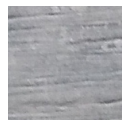
LEAD QUARTZ



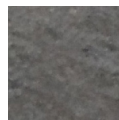
LIGHT TIMBER\*\*



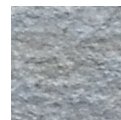
NATURAL TIMBER \*\*



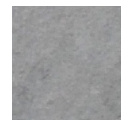
GREY TIMBER\*\*



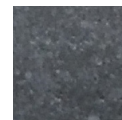
STEEL GREY SLATE\*



NATURAL SLATE\*



SILVER QUARTZ



MIDNIGHT STONE

Standard dimensions: 60 x 60 cm; thickness 2 cm. Weight 47kg / m<sup>2</sup>, (17 kg / tile)

Other sizes available on request: \* 45 x 90 cm, thickness 2 cm (18 kg / tile)

\*\* 30 x 120 cm, thickness 2 cm (17 kg / tile)

<b>Use</b>	<p>DALLE CERAMIC tiles are designed for use with the FORCE DALLE or HYRANGER TS waterproofing systems on private roof terraces with pedestrian traffic.</p> <p>The tiles are placed on adjustable Axter Paving Slab Supports positioned on the waterproofing membrane. They can also be laid over concrete, gravel or sand.</p> <p>DALLE CERAMIC tiles are suitable for use</p> <ul style="list-style-type: none"> <li>- In lowland and mountain climates</li> <li>- In locations where exposure to wind is equivalent to a pressure of 4712 Pa</li> </ul> <p>When the tiles are used on a terrace with an operating load (NF P 06-001) greater than 450 daN / m<sup>2</sup>, the support density should be increased (by adding a central support under each tile, for example)</p>
<b>Packaging</b>	Supplied in packs of 2 tiles - 60 tiles per pallet (21.60m <sup>2</sup> )
<b>Precautions for use</b>	<p>As DALLE CERAMIC tiles are water resistant, some surface water may collect after a rainstorm. This can be removed using a squeegee or mop.</p> <p>The tiles can be cut with a diamond disk in two stages: first cut 1cm deep followed by a second cut, this is to avoid a break at the edge.</p> <p>Maintenance information is available from Axter Ltd.</p>

Characteristics		
<b>Dimensions</b>	60x60x2cm	
<b>Weight</b>	17 kg / tile	
<b>Strength</b>	cf. DTU 43.1	T11 equivalent
<b>Breaking load</b>	EN 1339	Class 140 - Marking 14
<b>Bending strength</b>		Class 3 - Marking U
<b>Water absorption</b>	EN ISO 10545-3	<0.5%
<b>Impact resistance</b>	EN ISO 10545-5	0.83
<b>Deep scratch resistance</b>	EN ISO 10545-6	Complies
<b>Thermal linear expansion coefficient</b>	EN ISO 10545-8	Complies
<b>Thermal shock resistance</b>	EN ISO 10545-9	Complies
<b>Expansion in humidity</b>	EN ISO 10545-10	Complies
<b>Frost resistance</b>	EN ISO 10545-12	Complies
<b>Resistance to chemical attack</b>	EN ISO 10545-13	Complies
<b>Resistance to stains</b>	EN ISO 10545-14	Complies
<b>Anti-slip properties</b>	DIN 51-130	R11

---

**Warning**

Broken tiles should be replaced immediately.

If tiles are used on slab supports more than 10 cm tall, Axter recommends the use of DALLE CERAMIC tiles pre-fitted with a galvanized sheet on the under surface (provided upon request). This minimises the risk of personal injury from sharp edges in the event of a DALLE CERAMIC tile being broken by a heavy falling object.

Axter cannot be held responsible for the system (DALLE CERAMIC+ galvanized sheet) which are not directly and entirely supplied by us.

---

The manufacturer reserves the right to modify, at any time, the characteristics of this product