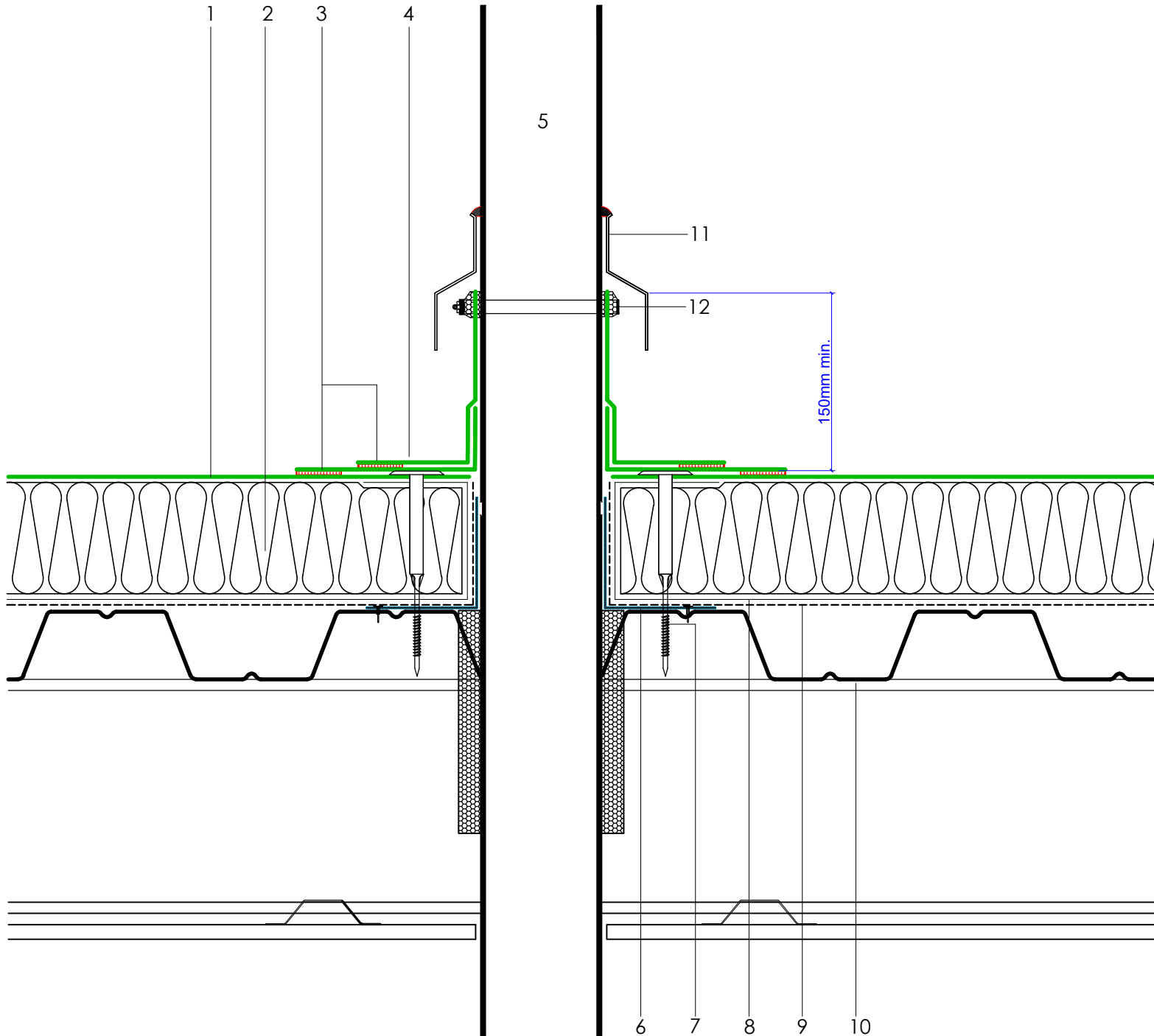


1	ECOFLEX® FM single ply membrane mechanically fixed with ECOFLEX® membrane washers and (C) fixings
2	HYTHERM® tapered / flat board insulation mechanically fixed with ECOFLEX® insulation washers and fixings (thickness to achieve design U-value and/or minimum 1:40 design fall)
3	Heat welded seam - 40mm
4	ECO/D non-reinforced membrane collar
5	Cold pipe by specialist contractor
6	Galvanised metal sleeve flashing mechanically fixed and sealed at perimeter (by specialist subcontractor)
7	ECOFLEX® tubular washer and mechanical fastener (C) fixing
8	ECOFLEX® air & vapour control layer (AVCL)
9	Vernis Antac ST Primer
10	Metal roof deck by specialist contractor
11	Weathering cowl by specialist contractor
12	Jubilee clip with suitable sealant under constant compression



Axter provide detail drawings as part of our technical design service. Such drawings should only be used as a guide during the design process and should not be utilised during construction. Axter accepts no liability for misuse of this service.

PROJECT : N/A  
CLIENT : N/A  
DRAWING : ECOFLEX® FM TYPICAL COLD PIPE PENETRATION DETAIL

DWG.No  
WR.M.EF.fm.90

SCALE  
1:5 @ A4

DATE  
2019

REV (if applicable)  
N/A

STANDARD DETAIL