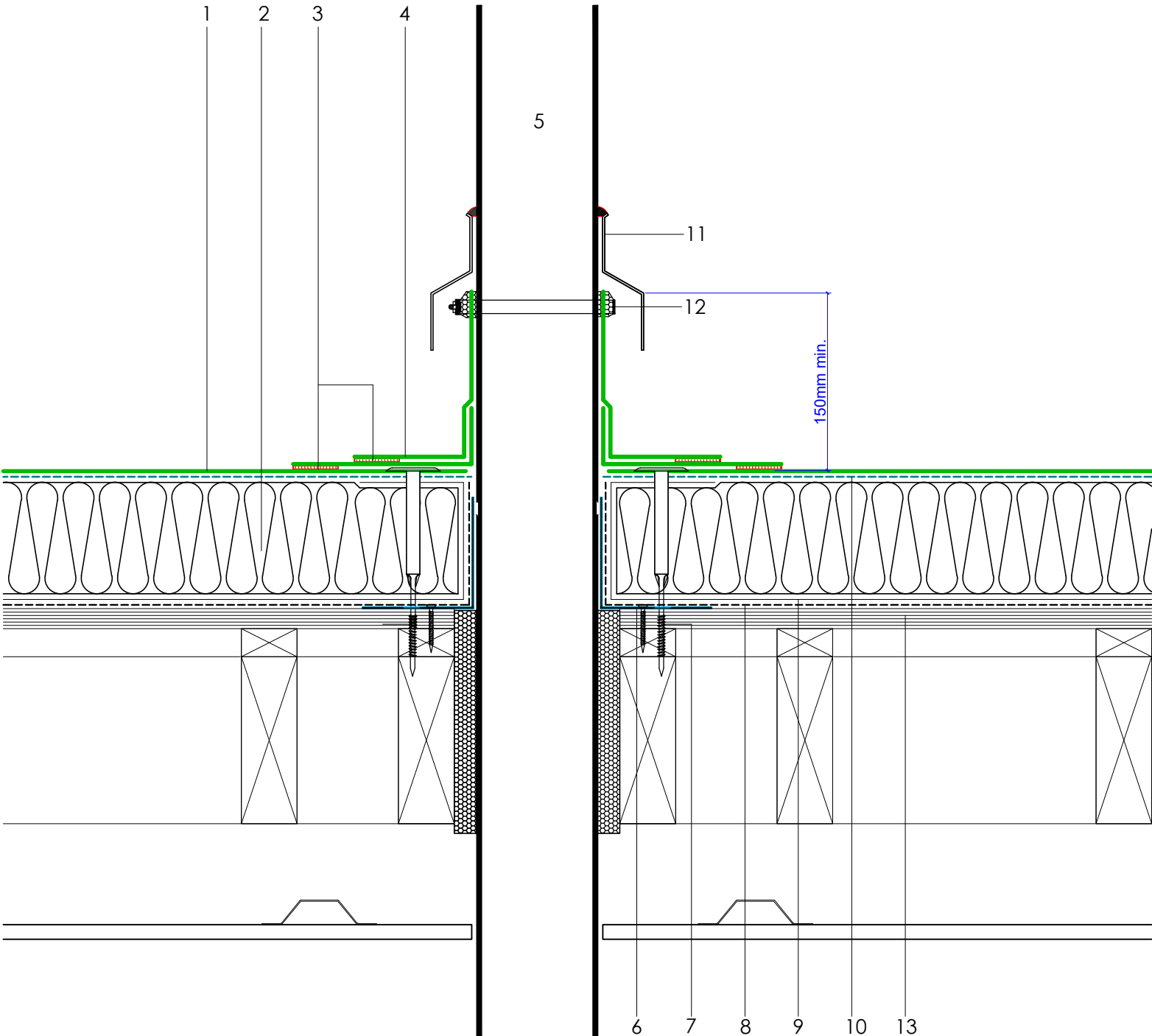



1	ECOLINE® ADH fleeceback single ply membrane fully bonded using ADH adhesive
2	HYTHERM® tapered / flat board insulation fully bonded using Hyra-Stik adhesive (thickness to achieve design U-value and/or design fall)
3	Heat welded seam - 40mm
4	ECO/D non-reinforced membrane collar
5	Cold pipe by specialist contractor
6	Galvanised metal sleeve flashing mechanically fixed and sealed at perimeter (by specialist subcontractor)
7	ECOLINE® tubular washer and mechanical fastener (C) fixing
8	Vernis Antac ST primer
9	ECOLINE® air & vapour control layer (AVCL)
10	ADH Adhesive
11	Weathering cowl by specialist contractor
12	Jubilee clip with suitable sealant under constant compression
13	Plywood roof deck by specialist contractor





www.axterhd.co.uk  
info@axterhd.co.uk  
01473 724056

Axter Ltd.  
West Road, Ramsgate, Kent, UK  
TN11 9JX

Axter provide detail drawings as part of our technical design service. Such drawings should only be used as a guide during the design process and should not be utilised during construction. Axter accepts no liability for misuse of this service.

PROJECT : N/A

CLIENT : N/A

DRAWING : ECOLINE® ADH TYPICAL COLD PIPE PENETRATION DETAIL

DWG.No

WR.P.EL.adh.90

SCALE

1:5 @ A4

DATE

2019

REV (if applicable)

N/A

STANDARD DETAIL

EI

Ecoline