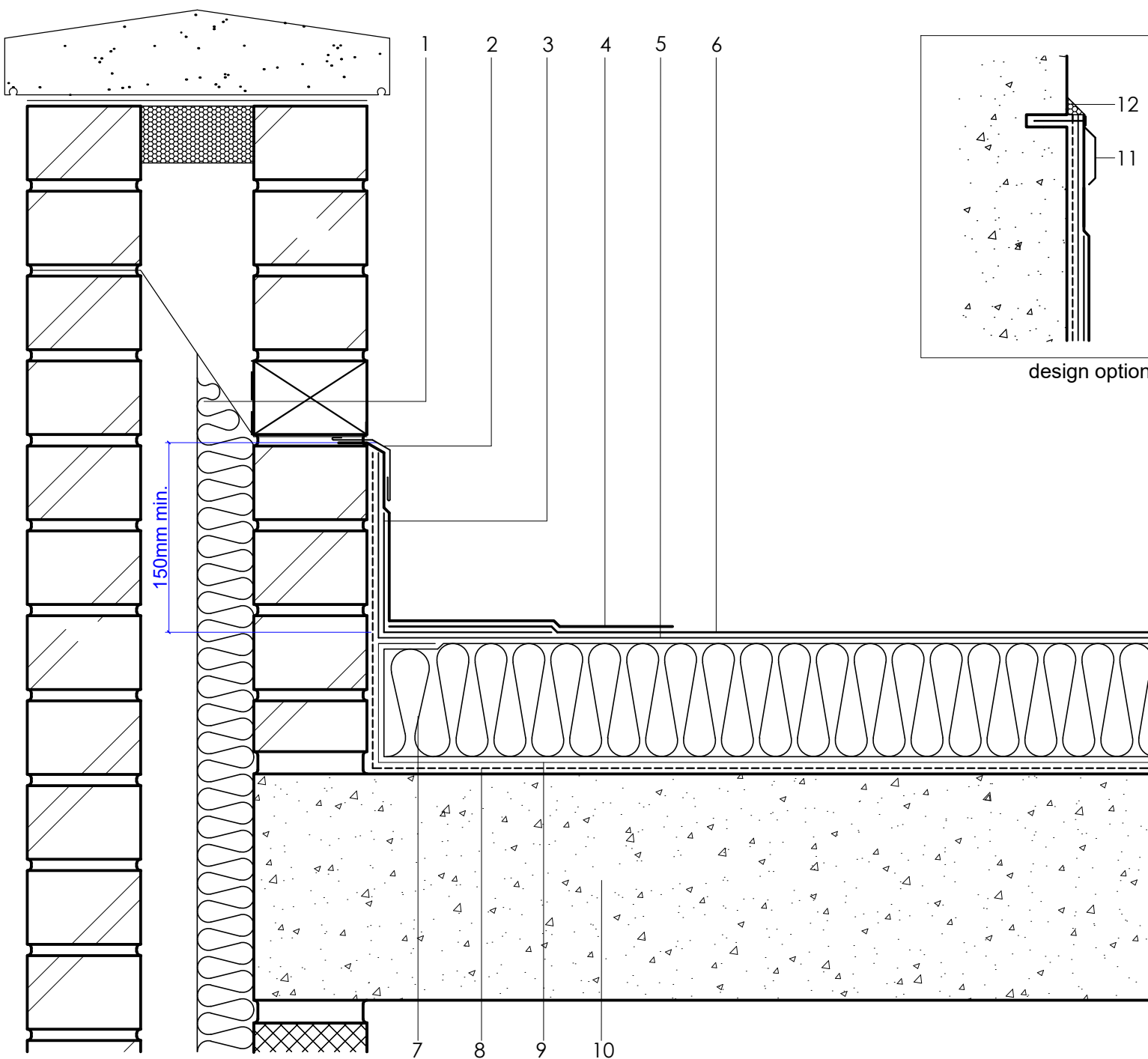


|    |   |
|----|---|
| 1  | DPC/cavity tray/weep holes to drain internally or externally as specified                           |
| 2  | Soft metal flashing by others   |
| 3  | 35PY Angle Strip  |
| 4  | EXCEL® HRS Detail Membrane  |
| 5  | HYRANGER® SPOT under-layer  |
| 6  | EXCEL® HRS Capping Sheet  |
| 7  | HYTHERM® ADH tapered/flat board Insulation (thickness to achieve design U-value and/or design fall) |
| 8  | Vernis antac ST primer  |
| 9  | EXCEL® air & vapour control layer (AVCL)  |
| 10 | Concrete roof slab by specialist contractor   |
| 11 | AXTER® Termination Bar (design option) (to suit building construction)                              |
| 12 | AXTER® Bitumseal Sealant  |



Axter Ltd.  
 info@axterhd.co.uk  
 01473 724056

Axter Ltd.  
 West Road, Ransomes European,  
 Ipswich, Suffolk, IP3 9SX

Axter provide detail drawings as part of our technical design service. Such drawings should only be used as a guide during the design process and should not be utilised during construction. Axter accepts no liability for misuse of this service.

PROJECT : N/A  
 CLIENT : N/A

DWG.No  
**WR.C.EX.10**

SCALE  
**1:5 @ A4**

DATE  
**2019**

REV (if applicable)  
**N/A**

STANDARD DETAIL  

Ex

Excel

DRAWING : EXCEL® TYPICAL SKIRTING UPSTAND TO BRICK PARAPET DETAIL