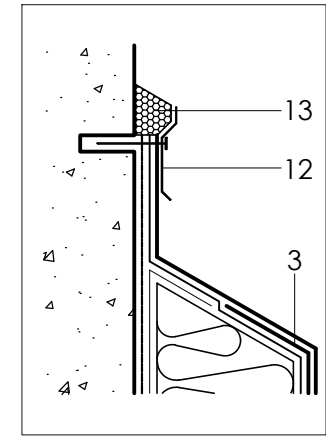
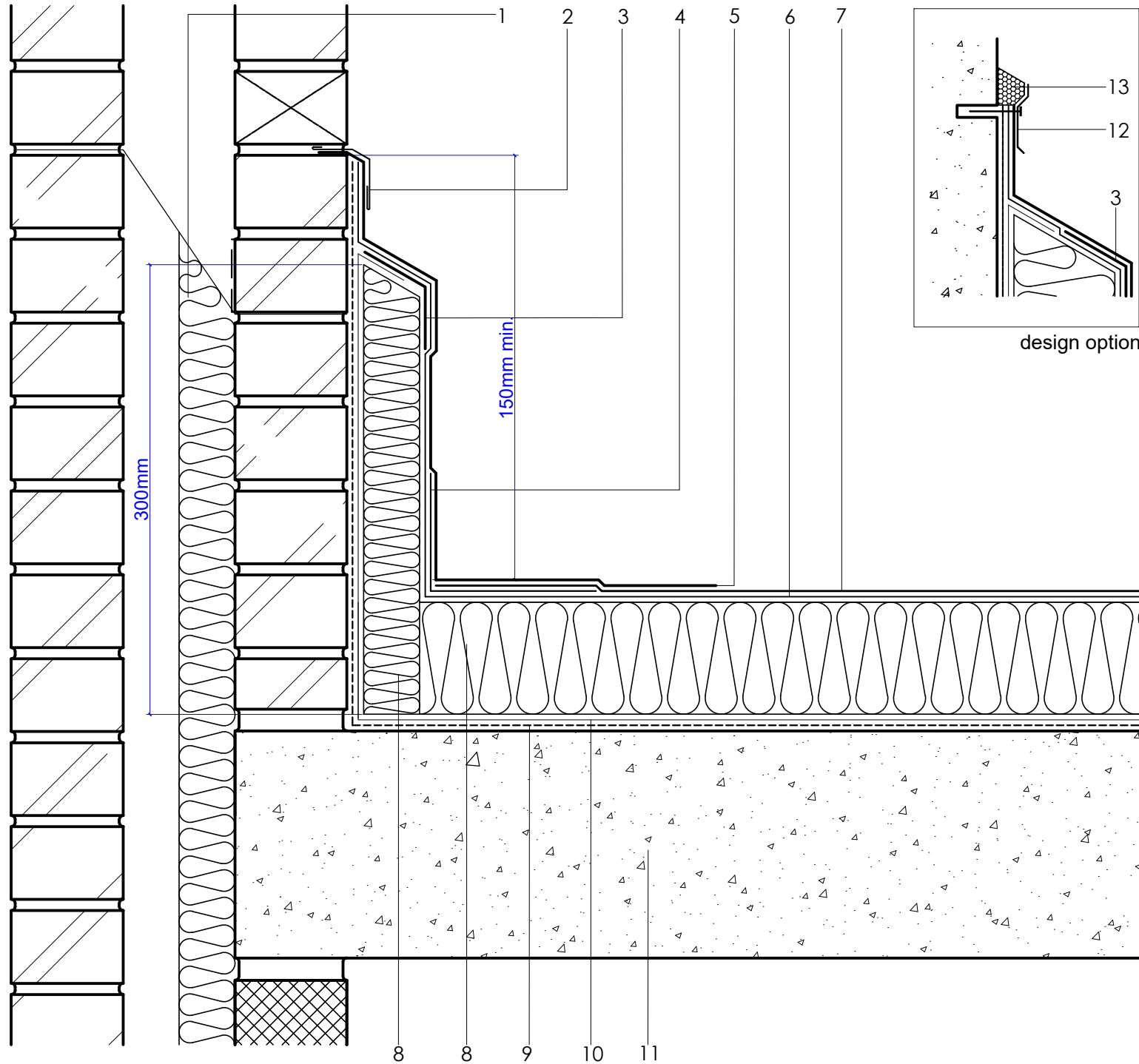


1	DPC/cavity tray/weep holes to drain internally or externally as specified
2	Soft Metal Flashing by others
3	Metal Hard Edge
4	35PY Angle Strip
5	FORCE 4000 S® Detail Membrane
6	HYRANGER® SPOT under-layer
7	FORCE 4000 S® Capping Sheet
8	HYTHERM® ADH tapered/flat board
9	Insulation (thickness to achieve design U-value and/or design fall)
10	Vernis Antac ST primer
11	VAP ALU® ADH air & vapour control layer (AVCL)
12	Concrete roof slab by specialist contractor
13	AXTER® Termination Bar (design option) (to suit building construction)
13	AXTER® Bitumseal Sealant



design option

Axter provide detail drawings as part of our technical design service. Such drawings should only be used as a guide during the design process and should not be utilised during construction. Axter accepts no liability for misuse of this service.

PROJECT: N/A

CLIENT: N/A

DRAWING: FORCE 4000 S® TYPICAL INSULATED
SKIRTING UPSTAND TO BRICK PARAPET
DETAIL

DWG.No

WR.C.F4000.20

SCALE

1:5 @ A4

DATE

2019

REV (if applicable)

N/A

STANDARD DETAIL

F4000S

Force 4000 S