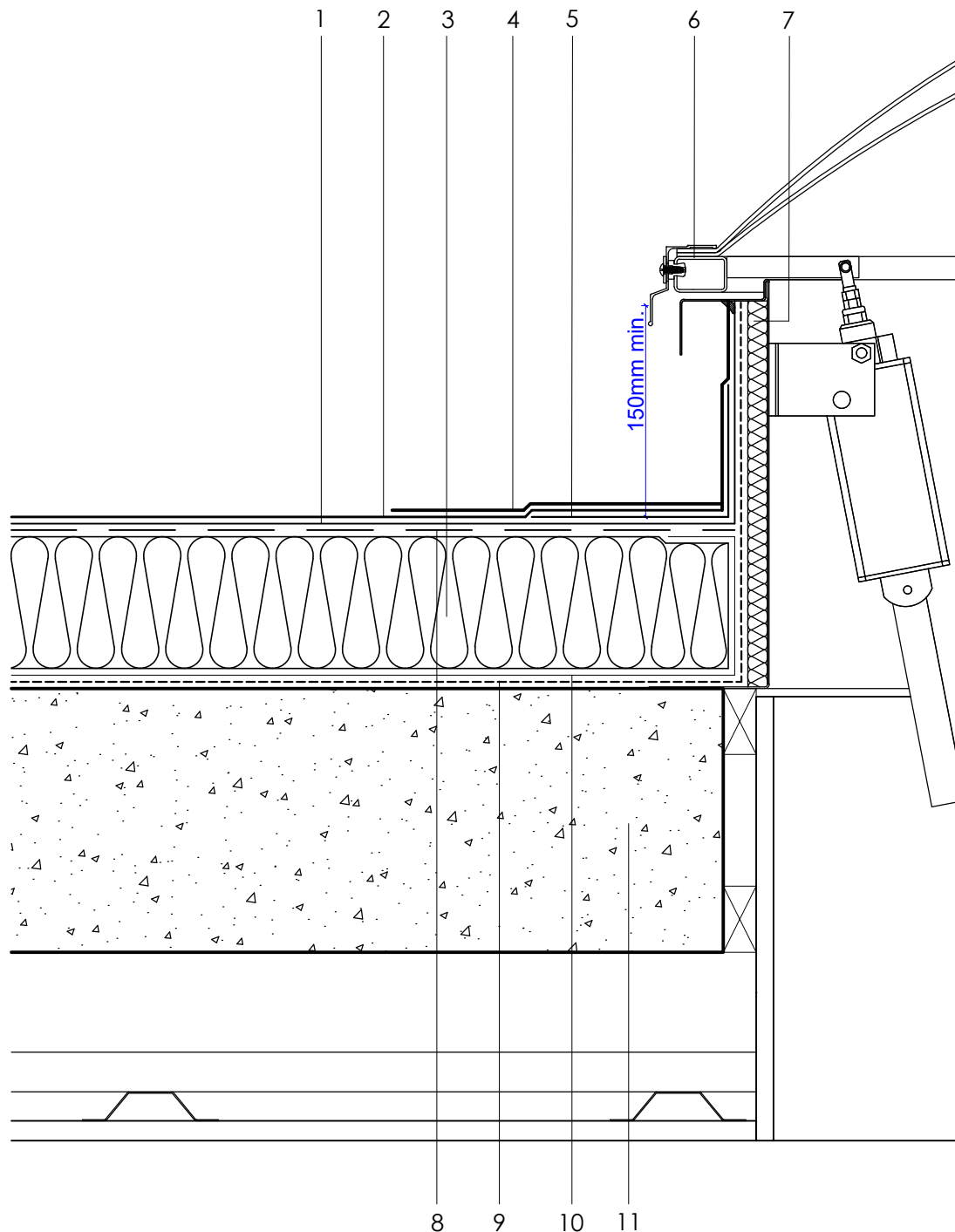
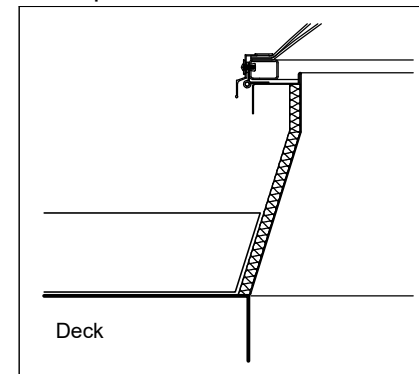


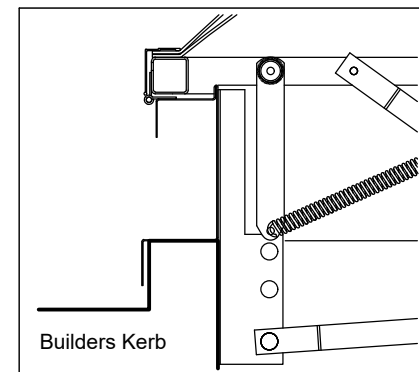
|    |   |
|----|---|
| 1  | FORCE® LINE under-layer   |
| 2  | FORCE® LINE Capping Sheet   |
| 3  | HYTHERM® ADH tapered/flat board<br>Insulation (thickness to achieve design<br>U-value and/or design fall) |
| 4  | FORCE® LINE Detail Membrane   |
| 5  | 35PY Angle Strip  |
| 6  | AXTER® rooflight  |
| 7  | AXTER® rooflight kerb   |
| 8  | Thermecran perforated layer   |
| 9  | FORCE® PRIME  |
| 10 | FORCE® LINE air & vapour control layer<br>(AVCL)  |
| 11 | Concrete roof slab by specialist<br>contractor  |



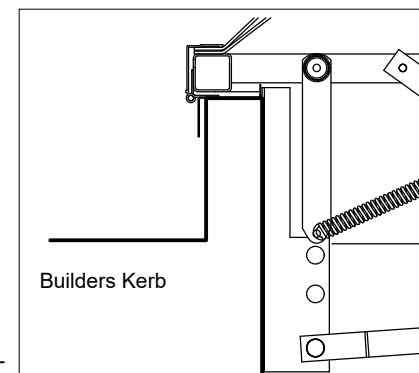
## kerb options



Tapered Kerb



Adapter Plate



Z Frame

Axter provide detail drawings as part of our technical design service. Such drawings should only be used as a guide during the design process and should not be utilised during construction. Axter accepts no liability for misuse of this service.

PROJECT : N/A

CLIENT : N/A

DRAWING : FORCE® LINE TYPICAL UPSTAND DETAIL TO  
AXTER ROOFLIGHT DETAIL

DWG.No

WR.C.FL.40

SCALE

1:5 @ A4

DATE

2019

REV (if applicable)

N/A

STANDARD DETAIL

F.I

Force Line