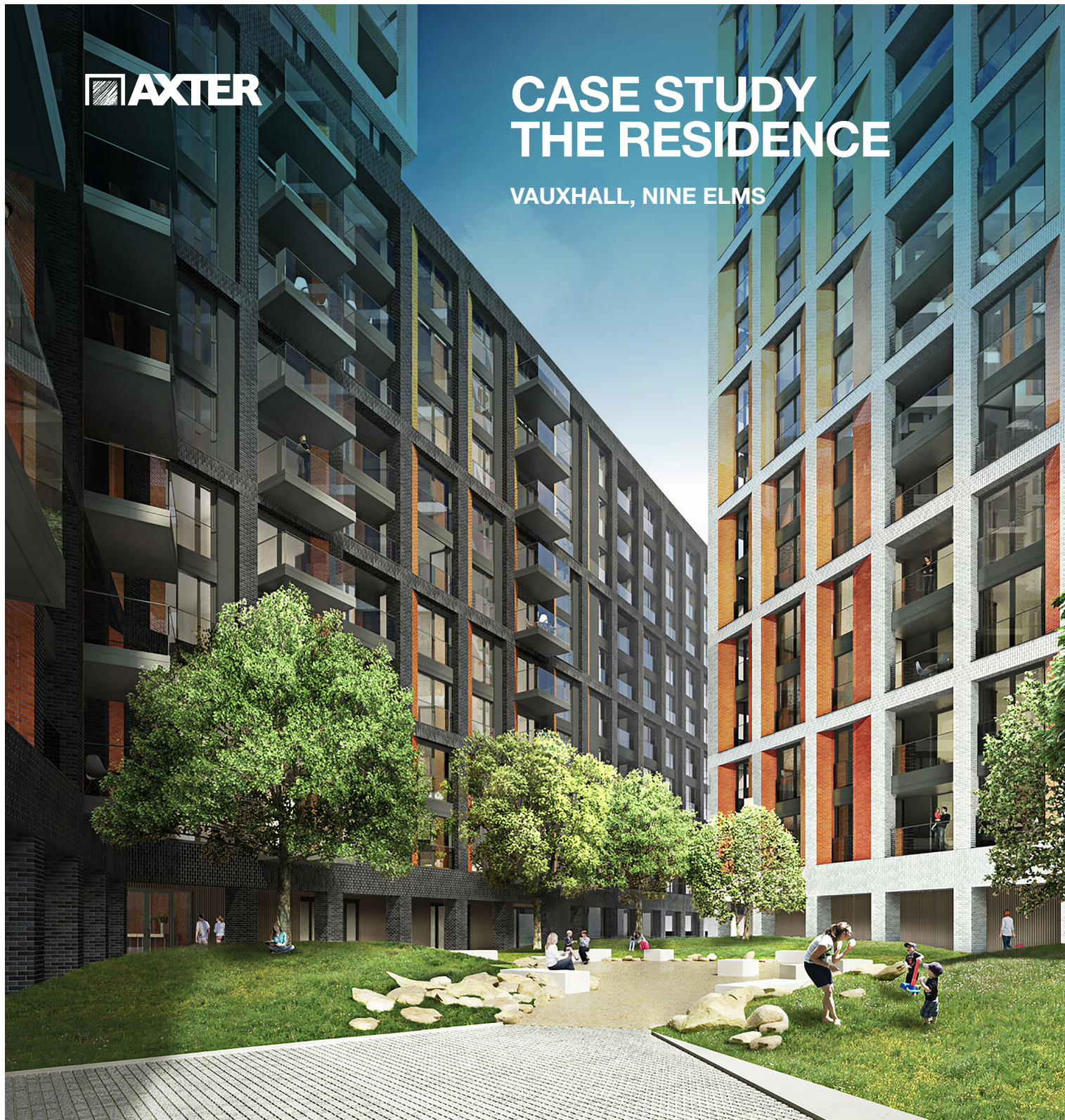




CASE STUDY THE RESIDENCE

VAUXHALL, NINE ELMS



SECTOR
Residential development

DEVELOPER
Bellway Homes
(Thames Gateway Region)

ROOF AREA (M2)
1500

CLIENT
Bellway Plc

ARCHITECT:
GRID Architects

ACCREDITED CONTRACTOR / AXTERSIELD INSTALLER:
Bracknell Roofing Ltd

[AXTER.CO.UK/CASE-RESIDENTIAL](https://axter.co.uk/case-residential)

THE RESIDENCE DELIVERED FAST, ROBUST HOT MELT WATERPROOFING THAT MET THE DEMANDING CONSTRUCTION PROGRAMME

SYSTEMS USED:

- Through early involvement in the design process and collaboration with the developer and project architect, it was agreed a second generation, Hot Melt, inverted roof structural waterproofing system, accredited for living roof, and zero fall application, combined with Cityflor® root resistant membranes and Starcoat® QC cold applied liquid waterproofing, was the right solution.

Wilotekt®-Plus - A unique polymer modified bitumen compound formulation, combined with reinforcement mesh and high strength protection membrane, results in a tough, seamless, flexible, self-healing monolithic waterproofing system, with fast installation and building lifetime durability.

Cityflor® - A robust SBS polymer modified bitumen membrane with root resistant modification that has proven long-term resistance to root penetration and specifically designed to receive intensive landscaping finishes.

Starcoat® QC - A BBA accredited flame free and quick cure, single component polyurethane (PU) resin waterproofing system that provides a fully adhered waterproofing layer.

CHALLENGES:

- The fast construction programme on this project imposed stringent requirements with regard to design, delivery, installation sequencing and coordination with Axter's on site Quality Assurance (QA) team.

The rapid build programme meant the waterproofing system must be capable of withstanding construction traffic and activity from other trades, with limited protection. Complex roof, elevation and cladding interface construction details resulted in the need for on site bespoke waterproofing detail design change, that maintained guarantees and ensured a defect free construction for the lifetime of the building.

Restricted site storage and delivery access combined with the complexities of inner London construction challenged Axter's logistics team to provide multi-vehicle, timed delivery without risk of delay or programme disruption.



SOLUTIONS:

- Strict project deadlines were met by our 2nd generation Wilotekt®-Plus hot melt structural waterproofing system. The pour and roll application significantly reduced installation times, ensuring all areas were waterproofed quickly in time to receive a variety of roof finishes – living roof, paving, solar panels etc.

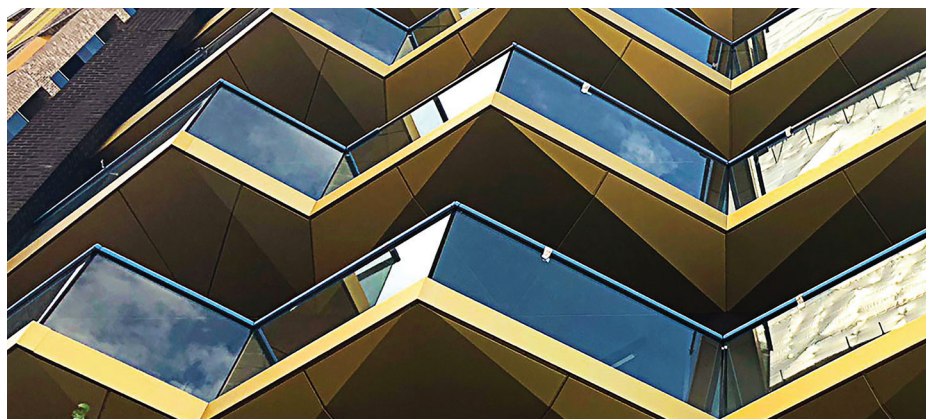
Wilotekt®-Plus was installed fully bonded to the concrete slab, providing a robust, 7mm thick, self-healing system capable of withstanding significant construction traffic without defect.

Upstands were completed using Cityflor® root resistant bitumen membranes and complex details, where a fire risk was identified by Axter QA, were completed using Starcoat QC in accordance with Axter specification requirements and the National Federation of Roofing Contractors (NFRC) Safe2Torch guidelines.

Our accredited Axtershield Installer Bracknell Roofing Ltd followed the project specification in full and works were completed to a very high standard. Regular on-site quality checks were conducted by Axter QA personnel to ensure guarantee procedures were followed and programme deadlines were met.

“Axter is a company with technically advanced products. Every site is quality checked by Axter QA and I receive a clear report. It's good to have a partner committed to our joint success and capable of dealing with the unexpected.”

M Gorick - Bracknell Roofing Ltd



AXTER LTD

West Road, Ransomes Europark,
Ipswich, Suffolk IP3 9SX

AXTER.CO.UK

01473 724056 info@axterltd.co.uk
Registered in England No. 1446923