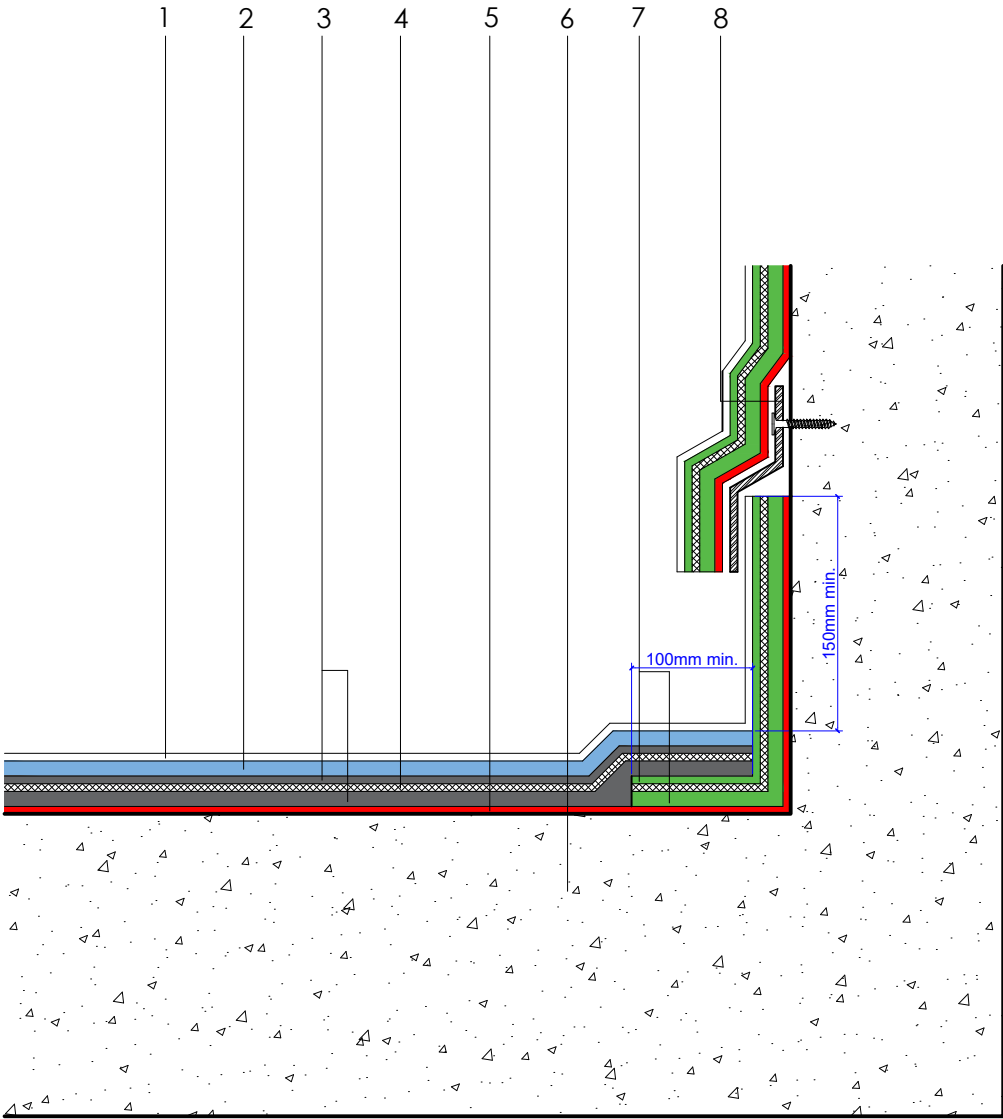


| | |
|---|---|
| 1 | Starcoat PMMA [®] coloured or clear sealer (quartz aggregate or decorative chips optional) |
| 2 | Starcoat PMMA [®] self leveling mortar and aggregate |
| 3 | Starcoat PMMA [®] waterproofing |
| 4 | Starcoat PMMA [®] fleece reinforcement |
| 5 | Starcoat PMMA [®] primer (if required) - refer to project specific specification |
| 6 | Generic substrate - refer to project specific specification |
| 7 | Starcoat PMMA [®] thix vertical waterproofing |
| 8 | Proprietary flashing sealed with solvent free mastic and struck pointed (by specialist contractor) |



Axter provide detail drawings as part of our technical design service. Such drawings should only be used as a guide during the design process and should not be utilised during construction. Axter accepts no liability for misuse of this service.

PROJECT : N/A

CLIENT : N/A

DRAWING : STARCOAT PMMA[®] TYPICAL UPSTAND WITH
FIXED FLASHING DETAIL (OPTION B)

DWG.No

SPMMA.0816.60

SCALE

1:5 @ A4

DATE

2019

REV (if applicable)

N/A

STANDARD DETAIL

S.p

Starcoat PMMA