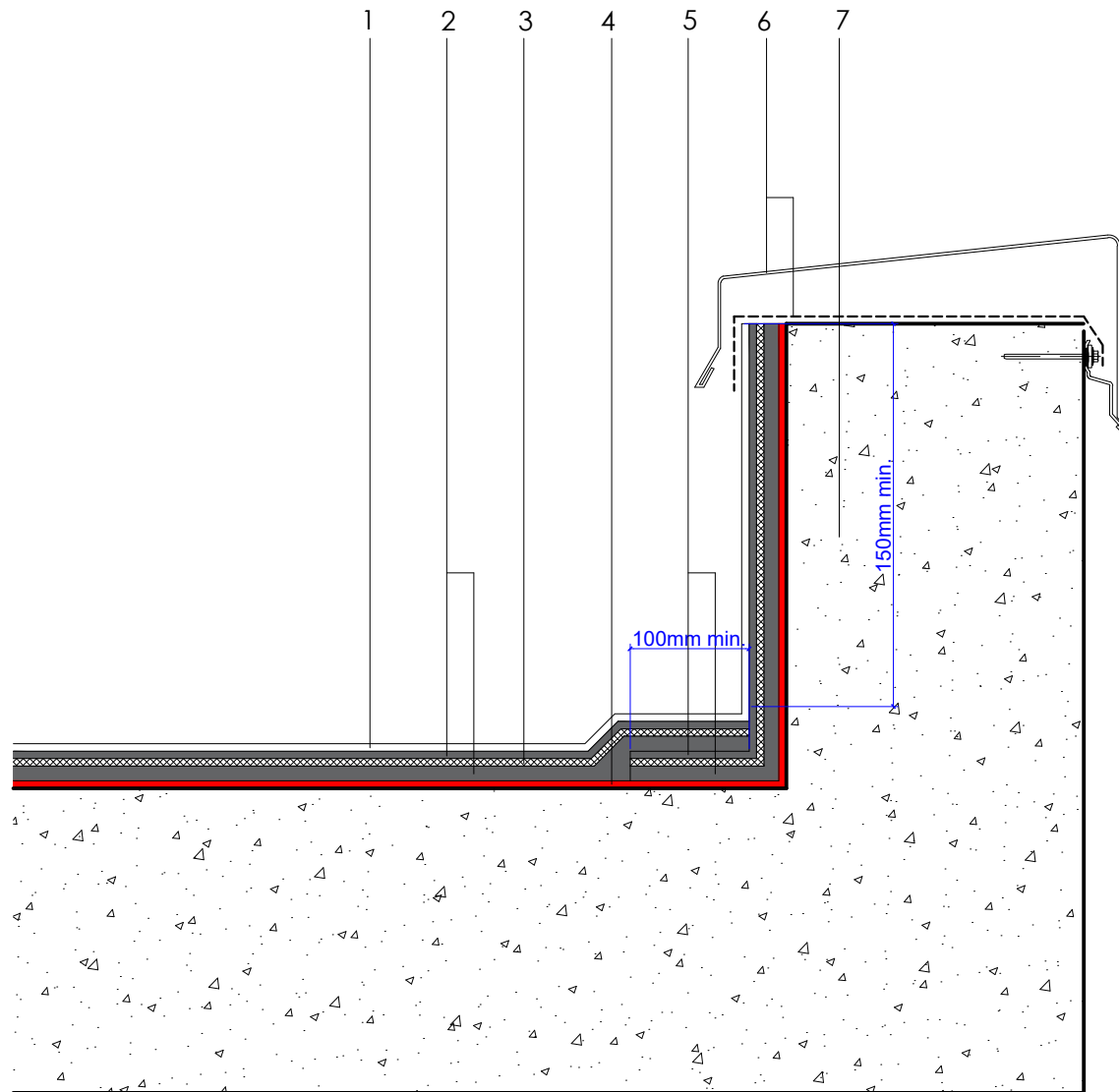


| | |
|---|---|
| 1 | Starcoat Colour protective coating RAL 7043 (Starcoat anti-slip coating optional) |
| 2 | Starcoat QC® waterproofing |
| 3 | Matcoat reinforcement fabric |
| 4 | Primcoat primer - refer to project specific specification |
| 5 | Starcoat QC® vertical waterproofing (inc Starcoat Thixo additive) |
| 6 | Metal capping and DPM lapped and sealed by specialist contractor |
| 7 | Generic substrate - refer to project specific specification |



Axter provide detail drawings as part of our technical design service. Such drawings should only be used as a guide during the design process and should not be utilised during construction. Axter accepts no liability for misuse of this service.

PROJECT : N/A

CLIENT : N/A

DRAWING : STARCOAT QC® TYPICAL UPSTAND TO
SECRET FIXED CAPPING DETAIL

DWG.No
SQC.1016.60

SCALE
1:5 @ A4

DATE
2019

REV (if applicable)
N/A

STANDARD DETAIL

S.qc

Starcoat QC