



Furlong Flooring®
First choice flooring for every room

GENERAL INSTALLATION GUIDELINES DRYBACK





Storage & transport

Boxes should be stored and transported on a flat surface in neat stacks, always store the cartons flat and never put them upright/on-end. Do not store the boxes in very cold (less than 2°C) or very warm (more than 27°C) or damp places.

Prior to installation

Visual inspection

Please ensure the product is inspected and checked for damage, defect or variation prior to installation in adequate light conditions. Check that the colours correspond to those ordered, the quantities are correct and there is no visible damage to the boxes. Check the Dryback panels during installation for any visible defects. Do not install any panels that display any imperfections. We recommend that you always use materials from a single production batch for each installation, as we cannot guarantee a shade match between different batches. Be aware that some designs have a natural variation within them. We also recommend that the product is mixed or shuffled between different boxes.

For defects that are visible prior to installation, Furlong Floorings will never assume responsibility for the uplift & relay costs. Installation implies acceptance.

Suitability

- Furlong Floorings Dryback can be laid on concrete, cementitious screed, anhydrite (calcium sulphate), timber, plywood, particleboard and ceramic tiles, raised access floors, which have been suitably prepared (see Floor Preparation).
- Furlong Floorings Dryback can be used with traditional water-based underfloor heating and cooling systems. See separate section on underfloor heating. The subfloor surface temperature must never exceed 27°C)
- Furlong Floorings Dryback is only suitable for indoor installation.
- Seasonal temperature conditions: Furlong Floorings Dryback can be used in indoor situations. Under all conditions, keep the temperature between 6°C (min.) and 35°C (max.). Avoid rapid temperature increases of more than 5°C per 12 hours.



- For installation in areas with high temperature variation (in certain cases this includes direct sunlight through glass) we recommend the use of dryback with a high temperature adhesive. If you require any further information, please contact your Furlong Flooring representative.

Composition, construction and quality of the subfloor

Knowledge of the composition and construction of the subfloor or base provides valuable information that allows you to correctly check the acceptable humidity, flatness, compressive and tensile strength of the subfloor. In addition, it tells you what type of floor preparation, leveling/smoothing compound, and possible moisture barrier you may need during the installation process. When there is ambiguity or doubt about the quality or composition of your subfloor, check your local installation standards and/or seek advice from your floor preparation, leveling compound manufacturer/supplier.

National regulations & standards

- Site and installation conditions must always comply with the relevant national regulations and installation standards.
- In case the national standard or regulation conflicts with the Furlong Floorings recommendation, the most stringent of the two prevails.

Subfloor preparation

Irregularities in the subfloor

Good preparation is essential for trouble-free installation. It is vital for an excellent Furlong Floorings Dryback finish. The appearance of Furlong Floorings Dryback will only be as good as the quality of the base over which it is installed. Any irregularities in the subfloor will show through the finished floor and must be suitably prepared before installation.

A suitable plywood/leveling compound should be selected to ensure that no irregularities show through to the surface of the finished floor. However, the selection of suitable materials, including plywood, smoothing/leveling compounds and any ancillary products, is dependent upon the occupational use of the area and must be agreed by the supplier of the preparative materials and the flooring contractor. All floor preparation materials used must be used in accordance with the manufacturer's recommendations and in accordance with the national standards for resilient floorcoverings.

The moisture content of the subfloor

- Unheated cementitious screeds less than 2.0CM% -75% RH (UK)
- Underfloor heated cementitious screeds less than 1.8CM% - 75% RH (UK)
- Unheated anhydrite (calcium sulphate) screeds less than 0.5CM%
- Underfloor heated anhydrite (calcium sulphate) less than 0.3CM%

Direct-to-earth concrete and stone subfloors must have an effective Damp Proof Membrane (DPM) in accordance with the national standards for the installation of resilient floorcoverings. Follow manufacturer's detailed instructions for the installation of a surface applied DPM and the use of levelling compound. An overview of manufacturers and suppliers can be provided by Furlong Flooring.

The effectiveness of a surface applied DPM heavily depends on the type of product, the way of application and the site conditions. It is the responsibility of the installer to get the correct advice from the manufacturer of the DPM and to apply it in accordance with their recommendations.



Important

Floor installation should not begin until the installer has assessed and approved the subfloor and installation conditions.

Acclimatisation

Furlong Floorings Dryback must acclimatise in the room of installation, or an equivalent area for at least 24 hours prior to installation, or until such time as the product has achieved an ambient temperature: this is a minimum temperature of 18°C and a maximum of 27°C.

Store the planks or tiles in straight piles away from heating, cooling or windows with direct intense sunlight. This is to achieve a gradual acclimatisation.

Temperature condition before installation

Furlong Floorings Dryback should be installed with a room temperature of between 18°C and 27°C and a subfloor temperature of above 15°C.

Installations in areas colder than recommended will influence the installation properties of Furlong Floorings Dryback. The planks or tiles will be less flexible, cutting will be harder and small pieces difficult to cut out. The lower the temperature, the more difficult the installation. Also, the risk to have excessive expansion is increasing with decreasing installation temperature. Installation in areas warmer than recommended increases the risk for excessive shrinking/gaps between panels.



Starting installation

Temperature conditions during and after installation

A constant temperature, fluctuating no more than 5°C per day, not below the required 18°C room temperature and 15°C subfloor temperature, should be maintained 24 hours before, during and 72 hours after installation.

Underfloor heating

Furlong Floorings Dryback can be used with traditional water-based underfloor heating systems (according to standard EN 1264 part 1 to 5). Wired electrical systems are not recommended unless the system is encased in a minimum of 9mm of suitable levelling compound. Direct contact with electrical wired heating systems must be avoided. The surface temperature must never exceed 27°C. If in doubt seek further advice. 72 hours after installation the underfloor heating must be gradually increased by increments of 5°C per day until it reaches the standard operating temperature conditions, with a maximum operating temperature of 27°C. For the suitability of the system please check the manufacturer's instructions.

Note (the following is only applicable to installation on Xtrafloor looselay self-adhesive underlays): Some infrared heating panels may be suitable, however care should be taken as some of these systems can provide very sudden heat gain which is not recommended. In any circumstance the surface temperature must not exceed 27°C. If in doubt seek further advice.

Underfloor cooling

Furlong Floorings Dryback can also be installed over floor cooling systems. However, the supply temperature of the cooling water must not be reduced below the dew point temperature. Always keep the temperature of the subfloor at least 3 degrees above the dewpoint.

Temperatures below the dew point will produce condensation and can therefore damage the adhesive and the floor covering.

Required Expansion Gap

Furlong Floorings Dryback floors which are directly adhered to the subfloor with a suitable permanent adhesive, do not require expansion gaps. For installation on top of self-adhesive looselay underlays, please refer to the section "recommended underlay"

Installation methods

Furlong Floorings Dryback can generally be installed with the following methods:

- Fully adhered to the subfloor (see the section "recommended adhesives")
- Adhered to a looselay underlay
- Adhered to an underlay which is adhered to the subfloor

For alternative installation methods, not included in this overview, always seek advice from Furlong Flooring.



Recommended adhesives

Please seek further advice regarding Xtrafloor® Adhesives or Design Floors approved adhesives for your country. Adhesive recommendations may differ by country or continent due to the composition of the adhesive, local climatic conditions and national installation regulations/standards.

For any exceptional conditions which require specific adhesive selection, please contact Furlong Flooring.

Recommended underlay

Although Dryback is traditionally adhered directly to the subfloor, consideration can be made to install it on an underlay as well. Xtrafloor® has underlays for both looselay and/or improved acoustic performance. Always use an underlay that has been tested and approved by Furlong Flooring to be used with the floorcovering. Furlong Flooring rejects all responsibility in cases of non-approved combinations.

Looselaid underlay

Xtrafloor® Flex Pro: Heavy Duty Use

- Improved sound insulation ($\Delta L_w=10$ dB with 2.5 mm Furlong Floorings Dryback)
- Release foil and pressure sensitive adhesive film for quick and easy installation.
- Suitable for underfloor heating and cooling.
- Provides excellent dimensional stability.
- Suitable for Roller Castor Chairs & rolling loads up to 250kg.

Xtrafloor® Flex Pro can smooth out small irregularities of a maximum 5mm wide. This allows for installation over existing floor coverings, such as linoleum, compact PVC floors and wooden floorboards or ceramic tiles (without stepping across the joints), with limited or no telegraphing of the subfloor irregularities.

Xtrafloor® Flex Pro needs to be installed on floors with a minimum surface temperature of 18°C during installation. It is of utmost importance to monitor and record these conditions during the whole period of installation. Keep the records as proof of installation conditions.

Furlong Floorings Dryback installed on Xtrafloor® Flex Pro is a “floating” floor. In stable temperature conditions, a tension free installation suffices (=1 to 2 mm expansion gap at the perimeter of the room/area). For smart solutions to cover the expansion gap, see ‘finishing your floor’.



Installation of looselaid underlay

Lay the sheets butted, edge-to-edge, at a 90° angle to the laying direction of the new floorcovering. Xtrafloor® underlays are to be laid printed side up (where applicable). There is no need to fix one sheet to another. Now begin laying your new floor according to the fitting instructions. Do not use adhesive without prior discussion with Furlong Flooring.

Adhered underlay

Xtrafloor® Acoustic: adding excellent acoustic properties in heavy duty conditions

- Improved sound insulation (ΔL_w up to 19 dB with 2.5 mm Dryback)
- Adhesive must be used to adhere the underlay to the subfloor and to adhere the Dryback to the underlay
- Suitable for underfloor heating and cooling
- Provides excellent dimensional stability
- Suitable for Roller Castor Chairs & rolling loads up to 250kg

Installation of adhered underlay

- Lay the sheets butted, edge-to-edge, at a 90° angle to the laying direction of the new floorcovering.
- PS or HT adhesive must be used to adhere the underlay to the subfloor. The use of an appropriate notched trowel is essential (A2).
- The installation needs to be rolled with a 50kg flooring roller immediately after the installation (in sections). A drying time of +/- 60 minutes (depending on conditions on site) must be respected before going to the next step.
- PS or HT adhesive must be used to adhere the Dryback to the underlay. The use of an appropriate notched trowel is essential (A2).
- The installation needs to be rolled with a 50kg flooring roller immediately after the installation (in sections).
- Excess adhesive can be removed with denatured alcohol (methylated spirit), please refer to the instructions of the adhesive manufacturer.
- Xtrafloor® Acoustic needs to be installed on a suitably prepared subfloor (see above).

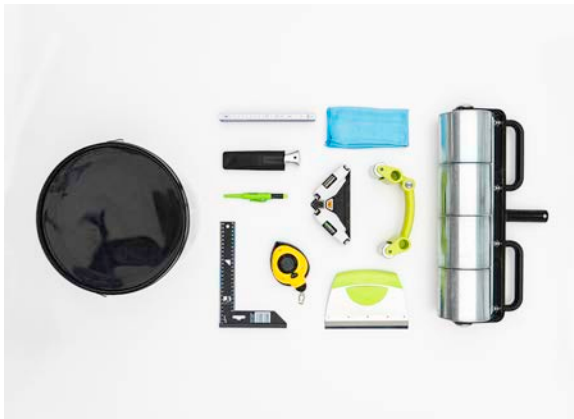
Warranty: the use of the appropriate Xtrafloor® underlay is covered within our warranty. Other underlays are not recommended or warranted.



Installation step by step

Recommended tools

- Tape measure
- Pencil
- Chalk line/laser line to ensure the installation starts/remains straight
- Adhesive and appropriate trowel (not required with a self-adhesive underlay)
- Damp cloth to remove adhesive residue (not required with a self-adhesive underlay)
- Set Square
- Utility knife
- Roller minimum 50kg (or a hand-roller for small areas, not accessible with the big roller)



- Determine the installation direction of the Design Floors flooring. Calculate how the partition of the planks or tiles will be across the width of the room/ area and mark a 100% straight line on the floor with help of a chalk line/laser line, normally in parallel with the longest straight wall.

- For an adhered installation (including adhered Xtrafloor® acoustic underlay), continue from step 3. For installation on a Xtrafloor® loose layed underlay, see the section “installation of looselayed underlay” above.
- Highlight a second line so creating a section (for example, 5 rows wide) to be glued with the correct type of adhesive. Prior to using the adhesive read the manufacturer’s instructions.
- Spread the right amount of adhesive evenly over the subfloor and let it tack-off (open time) until it reaches its initial bonding strength. For more information consult the specifications of the adhesive being used.
- Lay the planks or tiles, observing the direction of the arrows of the backing, into the tacked-off adhesive, in order to transfer the adhesive fully onto the backing (working time). For the second/next row, take a new panel and decide how big the first piece must be (or use one of the left-overs from previous rows). For an attractive and natural appearance, we do not advise to use the piece left over from row 1 as the first piece in the following row, install at random intervals. Otherwise this creates a so called “staircase effect”.
- Cut the planks or tiles, free of tension, against the wall or skirting.
- Do not spread adhesive on a section greater than can be processed within the working time.
- To ensure full contact with adhesive, immediately press every plank or tile with a rubbing block or hand roller.
- Wipe excess adhesive with a damp cloth.
- Immediately roll each section with a (minimum) 50kg flooring roller. Roll several times, in different direction, during the adhesive working time.
- Repeat steps 3 to 10 until the entire installation is completed.



Protection

Design Floors floors should be protected from heavy traffic for 72 hours after installation so that the tiles and adhesive can stabilise at constant temperature between 18-27°C.

First contact with water

Prevent the floor from coming into contact with water for the first 72 hours after installation. Hereafter the adhesive is sufficiently resistant to water so that the bonding strength will not be affected.

Finishing your floor

Xtrafloor® offers a range of smart flooring solutions to your finishing needs. The offer combines unique functionality with style: a hardwearing solution that ensures smooth transitions at all times.

How to finish your floor at a wall

Xtrafloor® paintable skirtings: style by choice

- Unique water-resistant material
- Colour coordinate your pre-primed skirting boards with the walls
- Use our renovation skirting to cover existing skirting boards



Xtrafloor® end profile

- Sleek aluminium profile on a strong aluminium base for a minimalistic design that lends a smart and modern look



How to connect your floor with higher or lower level floor surfaces

Xtrafloor® Adapter profile

- Sleek aluminium profile on a strong aluminium base for a minimalistic design that lends a smart and modern look
- Connect the floor with lower floor surfaces, with a height difference up to 6mm
- Also suitable to make the transition between 2 different types of floorcovering (e.g. Carpet)

How to cover the expansion gap within the floor surface, when installed over an existing expansion gap in the subfloor (only required when the floor is fully adhered).

Xtrafloor® T-profile

- Sleek aluminium profile on a strong aluminium base for a minimalistic design that lends a smart and modern look
- Durable and easy solution to cover the gap between 2 adjacent floors at the same level





How to finish your stairs in the same material as the floor (residential use only)

Xtrafloor® stairnosing

- Sleek aluminium profile for a minimalistic design that lends a smart and modern look
- Inner and outer corner stair nosing for LVT Dryback

Note: Furlong Floorings floor must be adhered to the treads and risers on stairs.



How to fill small joints to perfectly finish your floor and to help protect it from dirt & moisture

Xtrafloor® joint sealant

- Specially developed for LVT
- Available in different colours to perfectly match the floor.
- Xtrafloor® joint sealant is designed to fill unavoidable gapping and is not an attempt to mask poor workmanship and/or poor manufacturing.



For specific installation instructions on Xtrafloor® see www.installandclean.com



Maintaining your floor

Appropriate maintenance procedures will help to preserve the appearance and will extend the life of a Dryback floor. The frequency of maintenance will depend on the amount and type of traffic, degree of soiling, the floor colour and type.

Below we will give a short summary of the 5 key points to effective maintenance.



1. Preventative measures

- Keeping dirt off the floor is easier and less expensive than removing it.
- Proper entrance walk-off material is able to remove large amounts of dry soil as well as absorb water or oil-based moisture.



- Use furniture caps or other protection under heavy items or appliances to prevent indentation.
- Avoid rubber or latex backed mats, furniture feet and the like as the rubber or latex may leave permanent stains.
- Almost all flooring will vary in colour over time when exposed to UV light. Avoid this by using curtains or sunscreens when the sun is very bright.
- Mechanical damage of the floorcovering, caused by heavy overloading or sliding of furniture/items and permanent stains caused by rubber/latex are not covered by the product warranty.

2. Vacuuming

Regular vacuuming is the most important part of a successful maintenance program to remove all grit, debris and other solid particles. Vacuuming is far more effective for this type of soiling than wet mopping, which normally moves soiling from one place to another, rather than removing it.



- Prevention also means making the right choice of floorcovering and design/colour for the right area, e.g. avoid too dark or too light colours for high traffic areas near the entrance of a commercial building.
- Protect against scratching from furniture feet by using wide, free-moving, castors, glides, rollers or pads. NOTE: felt protection pads can pick up dirt and grit and subsequently cause scratching or further damage to the floorcovering.



3. Spill and spot cleaning

Spills and spots are inevitable, but they don't have to be permanent. Remove a spill quickly and there is less chance of permanent staining. First try to blot the spill with a dry cloth/kitchen towel, then use water. Only use detergents/cleaning products when the above is not sufficient to remove the spill/stain. Use neutral pH detergents.



4. Periodic cleaning

- Inspect and assess the appearance of the floor. Seasonality may also alter the maintenance requirements.
- Vacuum to remove all grit, debris and other solid particles.
- For light cleaning, a damp mop may be sufficient. Do not use cleaning products when not required.



For heavier cleaning, e.g. to remove oil/grease/surface dirt in kitchen area/entrance ways, wet mopping with detergent may be required, e.g. products from www.james.eu. In this instance always use the so called "two bucket" method, which is one bucket with water and detergent and one bucket with clean water for rinsing.

5. Deep cleaning

- Periodic cleaning is far more beneficial to the floorcovering than infrequent heavy or deep cleaning. However, seasonality can influence the amount of cleaning required.
- Remove surface dust and grit by vacuuming.

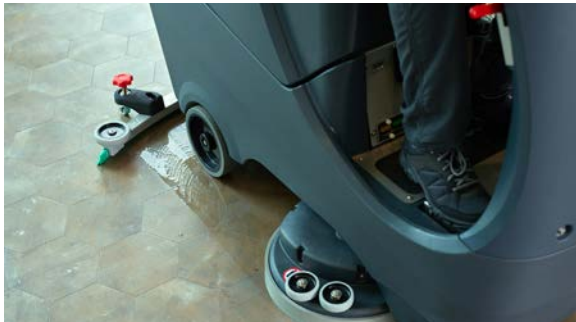


Once dust and debris free, with a spray, apply a solution of neutral pH cleaner to the section to be cleaned (or dependent upon the level of soiling, a light alkaline cleaner), carefully diluted to the manufacturer's instructions. Leave for enough time to react with and lift the soiling. Some agitation with a soft brush may be required.





Pick up the solution with a clean “microfiber” mop, using a continuous and steady side-to-side motion. When the mop head becomes loaded, it will leave residues and start to streak the floor. At this point the dirty mop head should be removed, wrung out, placed into a suitable bag and a clean mop head fitted. The cycle should then be repeated until the whole floor is completed, is clean and streak-free. Do not move dirty water from one place to another, extraction cleaning may be required.



- The dirty mop heads should then be machine washed and dried ready for reuse.
- Heavy soiling and soiling in the grain, may require a “scrubber dryer” with immediate wet vacuum extraction prior to mopping. Numatic International have a range of appropriate machines for this application. Further advice can be obtained directly from the manufacturer, their distributors or specialist floor care companies.



Important part from the warranty:

- Almost all flooring will vary in colour over time when exposed to UV light. Avoid this by using curtains or blinds when the sun is very bright. PVC also has a tendency to yellow in the dark. The combined effect can cause covered areas (under furniture, under permanently closed doors, etc.) to differ in colour compared to non-covered areas. This is a characteristic of all PVC floorcoverings and is excluded in our warranty conditions.
- Avoid rubber or latex backed mats as they may leave stains. Rubber and latex castors or protection caps under furniture must not be used (we advise the use of castors type 'W' in accordance with EN 12529).
- In case of loose lay installation, damage of the vinyl flooring caused by heavy overload, rolling loads or sliding activities is excluded in our warranty conditions.
- Do not allow cigarettes, matches and other very hot items to contact the floor as this causes permanent damage.
- Important: Cleaning or maintenance may only take place if the Design Floors floor is correctly installed and there are no visible imperfections.
- Contact your Furlong Flooring representative / supplier for the complete warranty conditions.
- This document was issued on (see at the end of this document) and supercedes all previous versions, at the same time it is superceded as soon as a new version is published.
- In case of conflict between these installation instructions and the local technical standards/ legislation, the most stringent of the two prevails.