



### A. Before Installation

#### Temperature and humidity conditions of the floor and areas where laminate flooring is to be installed:

Temperature and humidity levels of the floor and areas where laminate flooring is to be installed must be in conformity with the suitable temperature and relative humidity conditions before installation, during installation and after the process. Laminate flooring must be kept for 48 hours before installation to fit into the areas where installation is to be made. (Temperature of the areas where installation is to be made must be minimum +1 8°C. Floor temperature must be minimum +1 5°C. Relative humidity rate of the areas where installation is to be made must be 40-70%).

Surface of the floor where installation is to be made: All surfaces on which laminate flooring is to be installed must be ready for the process, according to the technical conditions that must be taken into consideration.

#### Meet the below-specified conditions, during the floor is being checked:

- Make sure that the floor is completely dry.
- Check the surface flatness. (Fluctuation on the surface must be  $\leq 2$  mm in a meter.)
- Check the floor hardness.
- Cleaning the surface of the floor where installation is to be made. (dust, dirt, etc.)

Installation can be made on concrete or tiles as well:

Laminate flooring can be installed also on the floors where water-circulation under floor heating systems are used. In such a case, please use a suitable underlay.

In addition to these, if electric under floor heating systems (check surface temperature) is placed in the cement or concrete layer (if the heating system is not above the concrete layer), it is suitable for installation. Surface temperature of the floor must not exceed maximum 28°C. In case of getting the guarantee of the surface temperature of the floor will not exceed 28°C from company produces the under floor heating system, use of adjustable plate heating systems might be allowed as to be used as installation floor. Standard plate-based electric under floor heating systems which are available in the market cause the surface temperature to be much higher than 28°C. In case of excessive sudden heat changes. Because of that it is not suitable as installation floor.

#### Unstable floors are:

- Textile material (carpet, rug, etc.)
- PVC, linoleum, wood / laminate flooring, etc.
- Must not be installed on wet surfaces such as toilets, bathrooms or saunas.
- In vehicle indoor flooring.

#### Mandatory regulations for installation:

-PE foam must be laid on covering all surfaces of floors for moisture insulations of the floor. For the purpose of ensuring sound, heat and moisture insulation in the floor and eliminating the roughness of the floor (if less than 2 mm), it must be laid parallel to the long side of laminate flooring panels and to cover the all floor before installation. While laying the foam strip side by side, they must be laid in adjacent sides. (by not leaving any open areas.)

-As laminate flooring is installed on the floor in floating system, they are not screwed, nailed and not glued on the floor.

-During the installations, distance of the joints of two short sides definitely must be at least 300 mm. In case of products with a curved side and/or special pattern as manufactured by the factory (for example decor tile), you must apply by shifting equally according to the curved side and/or pattern.

-The distance between laminate flooring and fixed edges (walls, heater pipes, etc.) must be 15 mm in installation areas.

-Laminate flooring must be installed maximum 10 m to the length of the panels and maximum 8 m to the width of the panels in installation areas. Transition profiles must be used areas where these measurements exceed.

-Damaged or unusable panels must be eliminated before and during the installation.

-Our products are manufactured in multiple locations. Please pay attention to our products that are shipped from the same location before starting the installation. Please do not use the products from different locations in the same areas.

-Before starting the installation please group all the products on the bases of their production dates and start using installation preferring materials with the recent dates to each other within the same area.

### B. Installation Process

- 1.(Figure 1) Place the underlay (foam) on the floor and check what tongue & groove profiles are.
- 2.(Figure 2) Start installation with the first line from the left corner of the room by meeting both tongue click sides of the panel to the wall. While starting the installation, place the distance protector (wedge of 15 mm thickness) that ensures distance with the wall.
- 3.(Figure 3) Place a whole panel whose tongue sides of laminate flooring face the corner. After that cut 2/3 of another panel and connect it to the whole panel whose tongue click sides face to the wall. After that cut 1/3 of another laminate flooring, connect it next to the 2/3 of laminate flooring. So cut side of the 2/3, 1/3 of the panel face to wall.
- 4.(Figure 4) To continue the created integrity, the tongue click of the short side of panel is placed on the groove click of the short side of the panel to get connected by 30 degrees angles and perform the installation by putting down to the floor. For details please check figures 4-a and 4-b.
- 5.(Figure 5) During installation lock the long side of the panels. For details please check figures 5-a and 5-b.
- 6.(Figure 6) Push to the tapping block by rubber mallet on the short side of the panel to lock the clicks. Not to damage the clicks on the panels avoid hard impact.
- 7.(Figure 7) By calculating the distance of wedge laminate flooring is marked as a and b, then it is cut and click on the long side of panel is get connected. If the part B is longer than 30 cm. it can be used at the beginning of the next line.
- 8.(Figure 8) Laminate flooring is fixed by hammering with pull bar and tapping block.
- 9.(Figure 9) During the installation, cut the section on the panels which faces the heating pipes by having 15 mm gap with fixed areas by convenient cutting tools. The pieces which were cut are glued to each other with convenient adhesive.
- 10.(Figure 10) Laminate flooring is cut on the sides by having minimum 15 mm gap according to stair step and fit them appropriately.
- 11.(Figure 11) Remove all the wedges.
- 12.(Figure 12) Skirting boards are cut depending on how they fit to be ready for installation.
- 13.(Figure 13) Fix the skirting boards to the walls, using a hammer and nails.

### C. After Installation

-Pieces of plastic or felt must be placed under the fixed or moving furniture legs.

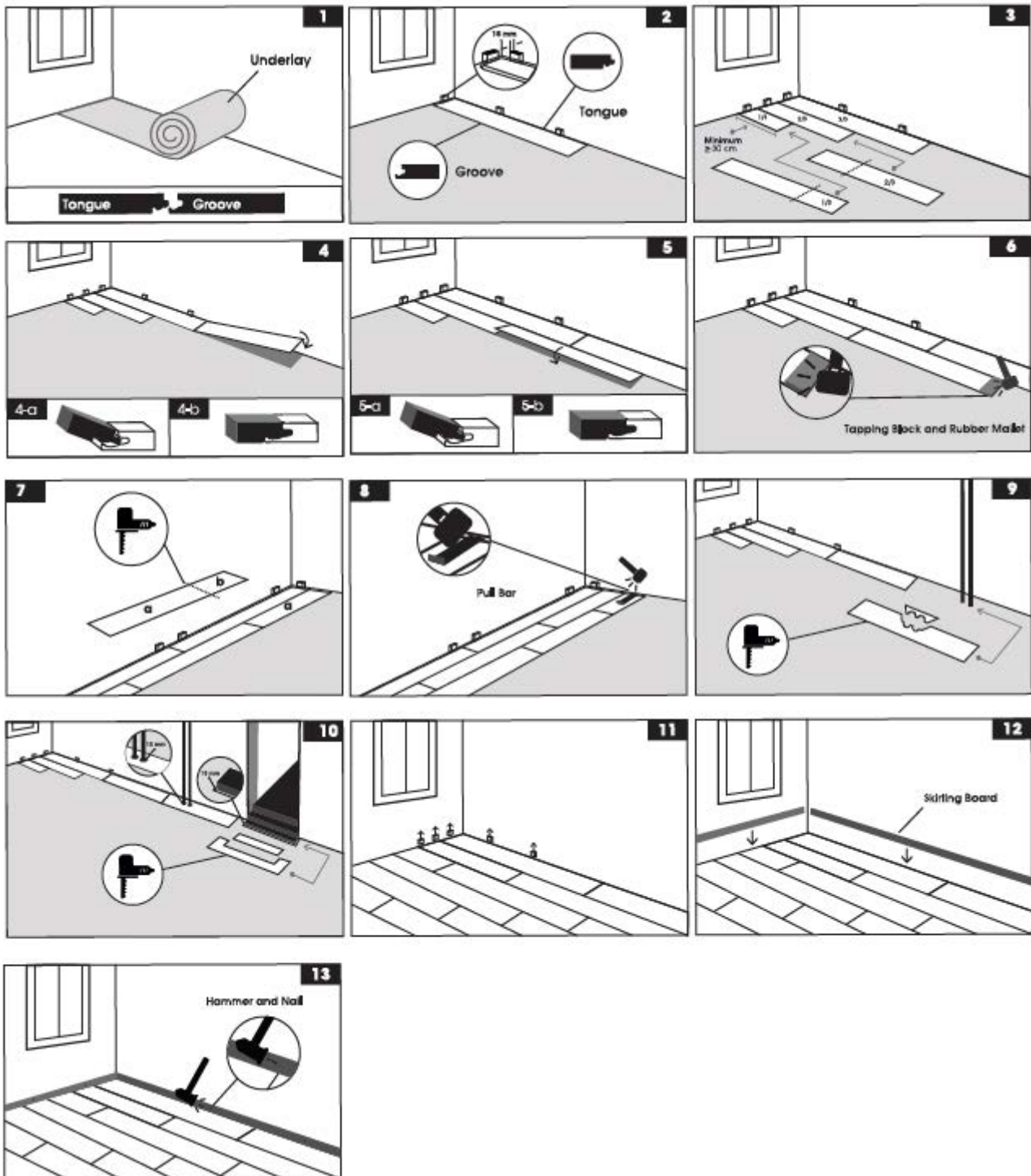
-Please change locations of the heavy furniture by lifting.

-Furniture with wheels, "couches and seats" wheels must be soft type.

-Please clean with a well squeezed micro fiber cloth that does not leave any residue, without letting laminate flooring's surface wet. Our products have TSE Laminate Flooring Standards Certificate and meet the requirements of the relevant standard. Unless otherwise stated on our products, "They are not water resistant and must be protected against exposure to water".

-Do not use any abrasive cleaners.

-Do not sand the laminate flooring.



**TS EN 13329 +A1**

| Utilization                      | Domestic |         |       | Commercial |              |       |            |
|----------------------------------|----------|---------|-------|------------|--------------|-------|------------|
|                                  | Moderate | General | Heavy | Moderate   | General      | Heavy | Very Heavy |
| Class                            | 21       | 22      | 23    | 31         | <b>32</b>    | 33    | 34         |
| Abrasion Resistance              | AC1      | AC2     | AC3   |            | <b>AC4</b>   | AC5   | AC6        |
| Abrasion Resistance Limit Values | ≥500     | ≥1000   | ≥2000 |            | <b>≥4000</b> | ≥6000 | ≥8500      |