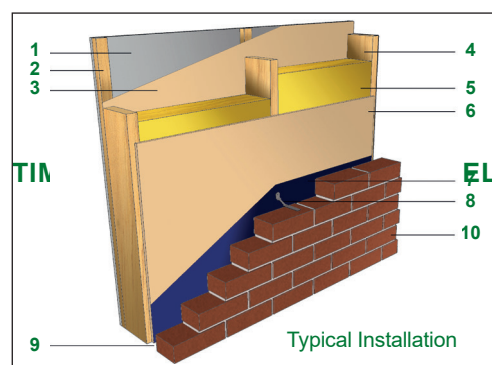


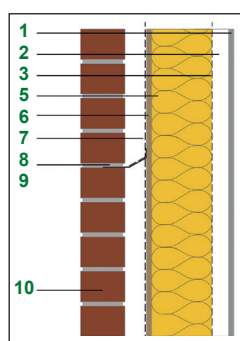
**MEDITE VENT** is a high performance breathable sheathing panel suitable for use in all types of timber frame structures. Combining high racking strength (in excess of Category 1 requirements) with high vapour permeability, it is the perfect choice for the outer sheathing layer in 'diffusion open' breathable timber frame walls.

### FEATURES AND BENEFITS

- Integral component in Passive House Institute (PHI) Certified MEDITE SMARTPLY AIRTIGHT building systems, also incorporating SMARTPLY AIRTIGHT OSB
- Breathable sheathing panel suited to 'water vapour diffusion open' wall designs
- Very low water vapour diffusion factor to prevent condensation (Tested by Fraunhofer Institute for Building Physics)
- High performance – in excess of Category 1 racking strength
- No added formaldehyde contributing to healthy environments
- CE 2+ Marked in accordance to EN13986 for structural applications
- Manufactured from FSC<sup>®</sup> certified timber from our own forests



- 1 Inner lining
- 2 Timber batten providing service void
- 3 SMARTPLY AIRTIGHT (recommended)
- 4 Timber stud
- 5 Insulation
- 6 MEDITE VENT
- 7 Breather membrane
- 8 Stainless steel wall tie
- 9 Ventilated and drained cavity
- 10 Rainscreen cladding



### STRUCTURAL AND PHYSICAL PROPERTIES

PROPERTY	UNITS	STANDARD	VALUES
Thickness	mm	EN 324	12
Moisture Content	%	EN 322	4-9
Modulus of Rupture	N/mm <sup>2</sup>	EN 310	13
Modulus Elasticity	N/mm <sup>2</sup>	EN 310	1400
Internal Bond	N/mm <sup>2</sup>	EN 319	0.3
Swelling in thickness 24h	%	EN317	10
Water impermeability	-	EN 12467	Pass
Water vapour diffusion	μ	EN 12572	11.2
	Sd (m)		0.134
Vapour resistance	Mns/g	EN 12086	0.672
Racking strength	KN/m	EN 594 (BS 5268)	2.0 (Category 1 racking)
Thermal conductivity	W/(m.K)	EN 13986	0.1
Release of formaldehyde	Class	EN 13986	E1
Formaldehyde release	PPM	CARB Phase 2	0.01

MEDITE VENT is classified as a structural sheathing panel which is suitable for use in humid conditions, Service Class 2 Conditions to Eurocode 5 (EN 1995-1-1). It is suitable for use in classes 1 and 2 of EN 335.

MEDITE VENT panel fixing properties have been evaluated for typical fasteners used in the timber construction industry. The characteristic lateral load carrying capacities ( $F_{v,Rk}$ ) for fasteners loaded in single shear in C16 timber are shown as below:

FASTENER TYPE	$F_{v,Rk}$
2.9*50mm smooth nails	690 N
3.1*50mm smooth nails	778 N
2.7*50mm threaded nails	641 N

The lateral shear capacity of fasteners can be used for racking design to EN 1995-1-1. The results are validated with racking tests performed in accordance with EN 594.

# MEDITE<sup>®</sup> VENT

## INSTALLATION

When installing MEDITE VENT panels a 3mm expansion gap should be left around the edges of the panel to accommodate any movement resulting from changes in humidity. It is essential that the gaps are kept free from plaster, mortar and other debris during construction.

MEDITE VENT may be installed with typical timber fixings such as nails (smooth and threaded), staples and woodscrews. Typical specified nail diameters range from 2.7mm to 3.35mm depending on the building class and method of driving. The smaller of these diameters is preferable for 38mm thick studs to reduce the possibility of splitting. All fixings should be a minimum of 50mm in length or 2.5 times the thickness of the panel, whichever is greater.

Fixings should be galvanised, stainless steel or have similar corrosion resistant properties.

The type size and spacing of fixings should be confirmed by the timber frame panel designer.

Fixings should be spaced at maximum 150mm centres along panel perimeters and at 300mm centres on intermediate studs. Fixings must be at least 10mm from the edge of the panel.

In order to avoid buckling, fixings should commence at the top centre of the panel and continue outwards and downwards.

MEDITE VENT is suitable for sheathing timber frame wall panels with stud framing not less than 38mm in width and at a maximum of 600mm centres. Suitable sawing, routing and drilling tools should always be used.

During and especially after site erection, the timber frame wall panels must be protected from the weather using a permanently fixed approved breather membrane.

## HYGROTHERMAL DESIGN

Due to its very low water vapour diffusion factor MEDITE VENT is principally adopted as sheathing in applications where drying of the structure is required. An approved breather membrane is recommended, and is a requirement of some building control authorities. When used in combination with MEDITE VENT, it is important to ensure that the water vapour diffusion factor is equivalent or lower to that of MEDITE VENT, to ensure that wall breathability is not compromised.

A condensation risk analysis or advanced hygrothermal assessment of composite wall systems is recommended to ensure that the construction will not be at risk of moisture

damage throughout the life of the building. Detailed recommendations for control of condensation are given in BS 5250 which now refers to EN ISO 13788 as the method of calculation (Glaser method) but more modern and advanced methods of hygrothermal simulation are recommended, as detailed in EN 15026.

## SUPPLY

12 x 1197 x 2397mm. Other sizes and thicknesses available on request subject to minimum order quantities.

## APPEARANCE

MEDITE VENT retains the light tan colour of the wood fibre from which it is manufactured.

## STORAGE

MEDITE VENT panels should be stored horizontally and lifted clear of the floor using dry bearers as supports. Individual bearers should be of equal thickness and placed at not more than 600mm centres.

## SERVICE

For further information relating to transportation, handling, cutting or technical advice please contact MEDITE Technical Support Personnel:

**UK: +44 1322 424900**

**Ireland: +353 5 181 0205**

**Germany: +49 32221097221**

**France: +33 975189830**

**Netherlands: +31 858886230**

**Belgium: +32 28086256**

All MEDITE MDF products supplied for use in the construction and civil engineering industries are CE marked according to the requirements of the harmonised European standard for wood based panels EN 13986. This provides the necessary assurance to customers and users that MEDITE conforms with the European MDF standard, EN 622-5 and meets all the essential requirements for the Construction Products Regulation (supersedes Construction Products Directive) that are relevant to the product.

In accordance with the provisions of Third Party Certification required within the Final Regulations Order of the Airborne Toxic Control Measure (ATCM) by the California Air Resources Board (CARB) all MEDITE MDF products are CARB Phase 2 Compliant. The approved Third Part Certifier (TPC) Entwicklungs-und Prüflabor Holztechnologie GmbH (EPHTPC No W-08-010) is contracted to MEDITE to perform the quarterly assessment of the factory production control and to have stipulated formaldehyde tests carried out by the accredited EPH test laboratory.

This technical data sheet is provided for information purposes only and no liability or responsibility of any kind is accepted by MEDITE EUROPE DAC or their representatives. MEDITE EUROPE DAC have used reasonable efforts to verify the accuracy of any advice, recommendation or information. MEDITE EUROPE DAC reserves the right to alteration of its products, production information and range without notice. As we continually update our technical datasheets please check on [www.mdfosb.com](http://www.mdfosb.com) to ensure you have the latest version.



The mark of  
responsible forestry  
FSC® C020700

