

A GUIDE TO OSB

Drylining

Let's do the right thing!

**MEDITE®
SMARTPLY®** 
INNOVATIVE TIMBER PRODUCTS



AN INTRODUCTION TO **MEDITE SMARTPLY**

MEDITE SMARTPLY is a market leading manufacturer of sustainable wood-based panels. Our award-winning brands **MEDITE** and **SMARTPLY** are renowned for delivering the highest quality products, customer-led innovation and industry leading customer service.

Our manufacturing sites in Clonmel (**MEDITE**) and Waterford (**SMARTPLY**) in Ireland feature the latest production technology to deliver straighter, flatter and more consistent boards than ever before, in a range of sizes and thicknesses unparalleled within the industry. Constant progression and investment have allowed **MEDITE SMARTPLY** to enter new diverse markets and sectors, meaning that there is always a fresh pipeline of new products to address market demands.

Our commitment to sustainability is core to all levels of our business at **MEDITE SMARTPLY**; from our sustainably managed forests, to the manufacture of low embodied carbon materials, which contribute to sustainable building.

We have become known for adapting products and services to suit end users' needs, while maintaining a consistent stance on sustainability and creating products that add value throughout the supply chain.



A new standard

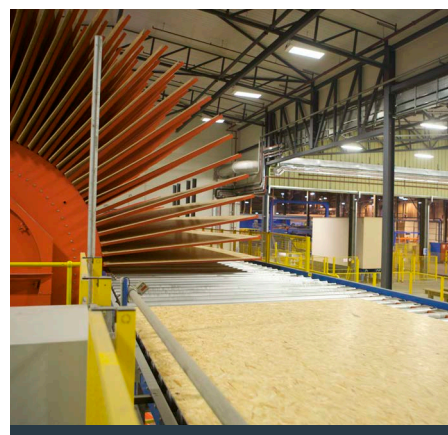
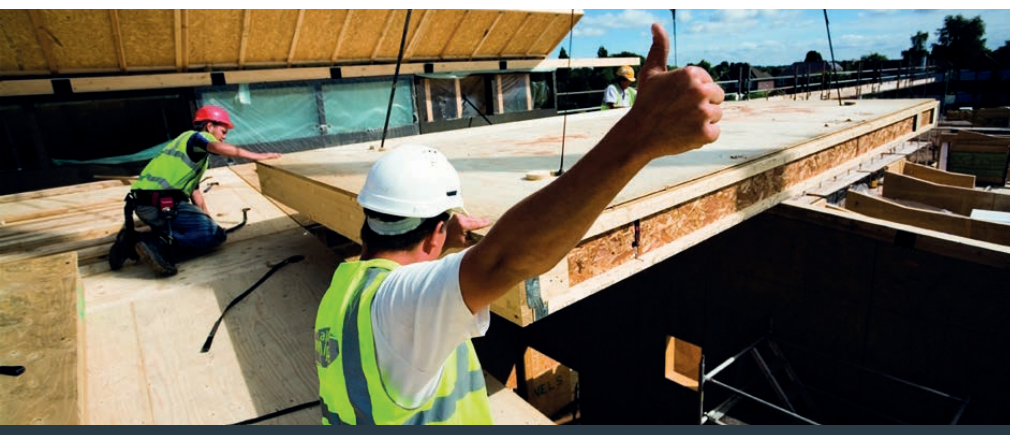
MEDITE SMARTPLY provides a diverse range of MDF and OSB panels with the aim of solving design and installation issues faced by the industry today.

With unrivalled quality and environmental certification, **SMARTPLY OSB** is one of the most environmentally efficient building materials on the market. Each panel is made from sustainable, FSC® certified, fast-growing timber: the forest

thinnings of new-growth pine and spruce. This includes the tops, which are not usually used to make any other wood-based product.

SMARTPLY OSB panels are fully certified, suitable for structural applications, CE and UKCA compliant, legal and sustainable alternatives to tropical plywood. We set the standard in fire performance, structural integrity and largescale projects.

Furthermore, all our OSB products are manufactured with no added formaldehyde as standard. This means that when working closely with our products, contractors can rest assured that each panel contains only the smallest possible level that is naturally occurring in all wood products. This is also part of our aim to better enable the continued conscious creation of safe, healthy environments for building occupants.



We define the standard of OSB.



WHAT DOES PATTRESS PLUS BRING TO DRYLINING?

As an engineered board, OSB is the highly versatile, environmentally friendly alternative to plywood, suitable for use in structural and non-structural construction uses. Its dimensional tolerances are wide ranging, with precise orientation and Controll® technology allowing **MEDITE SMARTPLY** to produce longer, stronger, more water-resistant boards for many applications.

MEDITE SMARTPLY has set new standards in the engineering of OSB to be able to offer some of the most reliable, trustworthy panels in the market.

PATTRESS PLUS features a continuous recess along one edge to perfectly accommodate 'C' stud flanges easily, securely and quickly. This enables dryliners to complete partition wall installations where fixtures and fittings

will require weightbearing support faster and safer, saving time and labour overall.

Panels are provided ready to use in thicknesses of 15mm or 18mm, widths of 397mm or 597mm (to perfectly fit 400mm and 600mm stud centres), and lengths of 1250mm or 2397mm, in line with leading plasterboard partition specifications. These options allow **PATTRESS PLUS** to be a safe one-person lift, so a dryliner can work alone when necessary.

PATTRESS PLUS offers consistent structural support. It's fully tested to the relevant sections of BS5234-2, demonstrating high pull-out strength, and meets the severe duty rating for pattressing, so speed of installation comes with no sacrifice of loadbearing ability.

In line with FIS safety task guidelines, use of **PATTRESS PLUS** enables a massive reduction in unnecessary dust and excessive noise as no cutting is required. The effect of this is that fewer power tools are needed on site, creating an overall much safer site environment.



IT'S ALL GO WITH MEDITE SMARTPLY



The new Queensferry High School had its internal fit-out completed ahead of schedule thanks to **PATTRESS PLUS**.

Aiden Keyes, Procurement Manager at Keyes Brothers explained, "We're familiar with the reputation of **MEDITE SMARTPLY**, so, when we heard about **PATTRESS PLUS**, we decided to use it for this large project."

"It definitely lived up to its reputation! It's a supreme quality product-structurally sound, safe and a huge time saver."

All materials used to fit out the 750 classrooms in the new build school had to be top quality, guaranteed to last, and installed quickly, ensuring term could start on time.

"We want to ensure we deliver the best possible work and results to all our clients and while we have always been confident in the **SMARTPLY** brand, **PATTRESS PLUS** has been a real winner. We will definitely be using it again."

While **PATTRESS PLUS** was developed to save dryliners time and reduce noise and dust generated by cutting on site, it's especially suitable for a school interior as it's manufactured with no added formaldehyde. This makes it

much safer for interiors where VOCs must be kept to a minimum, such as schools, as well as hospitals and museums.

"There is also a big ongoing initiative among industry professionals to reduce the amount of power tools used on site to help reduce noise and dust and improve safety," Aiden explains. "We really want to drive this initiative as a company, and **PATTRESS PLUS** has tangibly helped us to do this."

"Thanks to **PATTRESS PLUS**, we got the job done early!"

Aiden Keyes,
Keyes Brothers Construction.



Recognised
as a suitable
alternative
to plywood

SMARTPLY PATTRESS PLUS features no knots or inconsistencies and is certified for use in heavy load bearing applications.



Meets
severe
duty
rating

Provides secure anchorage for fixtures and fittings as tested to BS 5234-2.



In line with
safety task
FIS (Finishes
& Interiors
Sector)
guidelines

The health and safety of our customers is paramount.

www.thefis.org

SMARTPLY PATTRESS PLUS SPECIFICATION



SMARTPLY PATTRESS PLUS is an engineered OSB/3 panel incorporating a continuous recess, designed to accommodate 'C' shaped metal studs used in the construction of plasterboard partitions.

SMARTPLY PATTRESS PLUS is tested to the relevant sections of BS 5234-2 demonstrating high pull out strength, and meets the severe heavy duty rating for pattrassing. It is suitable for use in public access areas including corridors and stairwells, contributing to higher levels of impact

resistance. It has no added formaldehyde and therefore may also be useful in environmentally sensitive interior applications where formaldehyde emissions need to be kept to a minimum such as hospitals, laboratories, museums and schools.

Features/ Benefits:

- Ready prepared modular panels
- Fully certified alternative to plywoo.
- No added formaldehyde
- Provides secure anchorage for fixtures and fittings as tested to BS 5234-2
- Versatile
- Solid core
- Does not add to finished partition thickness
- Provides a robust partition structure
- Manufactured from FSC® certified timber from our own forests-assured supply of sustainable raw material

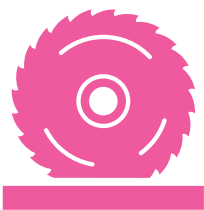
Technical data

Available Thicknesses	Available Widths	To Fit Stud Centre	Lengths
15mm or 18mm	397	400	1250mm or 2397mm
15mm or 18mm	597	600	1250m or 2397mm

*Some sizes and thicknesses available to order only.

Suitability

SMARTPLY PATTRESS PLUS is designed for use in non-load bearing metal frame drywall partition applications where the in-service climatic conditions and ambient relative humidity (RH) levels are similar to those expected in dry, sheltered construction environments.



Pre-cut and pre-rebated off-site

No onsite cutting required, saving time, reducing dust.



Fits perfectly between the stud wall

Pre-sized to fit 400mm and 600mm stud centres.



Two sizes and thicknesses available, allowing a safe one-person lift

Dryliners able to work safely alone when necessary.



To request a sample, visit:
www.mdfosb.com/smartply/request-samples

To find out how we are setting new standards
in timber panel engineering, go to:
www.mdfosb.com/drylining

Let's do the right thing!



MEDITE®
SMARTPLY® 
INNOVATIVE TIMBER PRODUCTS