

SMARTPLY[®]

SURE STEP

SMARTPLY SURE STEP is a tongue and groove OSB/3 panel with a high-performance and durable coating for improved performance during the construction phase of projects.

The panel has also been certified by the PHI (Passive House Institute) as an airtight panel. Using SURE STEP as an air tight layer for flooring or decking can contribute to sustainable building practices as well as reduce the energy consumption for heating, whilst the unique coating brings improved durability and slip resistance to the panel in all site conditions.

SMARTPLY® SURE STEP

SUITABILITY:

Manufactured in accordance with EN 300 SMARTPLY SURE STEP is a load bearing panel ideal for use as flooring or roof decking where improved durability, temporary protection, reduced edge swelling or reduced surface degradation are required on projects.

The unique and innovative coating, applied in house at SMARTPLY, is designed to sustain the effects of the weather and construction foot traffic while reducing the slip risk even in wet conditions.

EN 300 classifies OSB panels by their properties which relate to their intended use. SMARTPLY SURE STEP is classified as follows:

- OSB/3 - load bearing panel for use in humid conditions

Structures comprising SMARTPLY SURE STEP should be assigned to service class 1 or 2 as defined in EN 1995-1-1 (Eurocode 5). According to this standard, SMARTPLY SURE STEP is suitable for use in both of these service classes.

Manufactured on the state of the art Controll® OSB production line and coated in our own factory SMARTPLY SURE STEP is a structural panel that can be used for many applications:

- Flooring
- Roofing
- Modular construction
- Offsite manufacturing
- Timber frame construction
- Steel frame construction
- Temporary decking

NO ADDED FORMALDEHYDE

SMARTPLY OSB is manufactured using advanced resin technology that results in a high performance, no added formaldehyde panel. This specialist resin formulation provides a supreme bond with the wood strands as it has a reaction with the wood itself, when put under intense heat, creating a chemical weld. This is a different and superior type of bond to the mechanical weld that formaldehyde-based products exhibit. Depth of penetration is well beyond the minimum 0.3mm needed for a wood resin to provide adequate adhesive strength. This extra resin penetration also greatly improves the wood's resistance to thickness swell.

SPECIFICATION

- T&G2 2397mm x 1200mm x 18mm
- T&G2 2397mm x 1200mm x 22mm
- Other sizes available upon request, subject to minimum order quantities.



PERFORMANCE

SMARTPLY SURE STEP is manufactured in house by applying an innovative and high-performance coating on the top surface of SMARTPLY MAX panels.

The mechanical and structural performances of SMARTPLY SURE STEP can therefore be taken from the SMARTPLY MAX datasheet or found below for the specific properties of SMARTPLY SURE STEP.

SMARTPLY SURE STEP properties have been independently tested by 3rd party accredited laboratories.

The panels achieved low slip potential in dry and wet conditions. However, the product is not “anti-slip” and therefore it is recommended to take extreme care when walking on the panels in humid conditions and to avoid spills of materials that may increase the slip risk potential of the surface (such as oil, grease, dust).

Moderate change was observed on the panels during the duration of the standing water test, but no cracking of the coating occurred while standing water was present on the surface of the panel for the duration of the test. In the event of prolonged water pooling localised flake telegraphing on the surface can occur.

TABLE 1:

SMARTPLY SURE STEP Properties - Coated Side			
Slip resistance	Dry conditions	BS 7976-2	Low slip risk
	Wet conditions		Low slip risk
Reaction to fire (Flooring)		EN 13501-1	Cfl, s1
Abrasion resistance (Falling sand method)		EN 13696	1100 revolutions
Resistance to cold liquids		EN 13442	No change after 5 hours
Standing water test (EPH test method)	Coating only	Moderate change	45 days
	T&G joint*		45 days
Airtightness	Panels only, and as an airtight system	EN 12114	Class phA ($\leq 0.1 \text{m}^3/\text{m}^2.\text{h}$ @ 50Pa)
Vapour diffusion factor	Dry cup	EN 12572	$\mu = 686$ (sd=12.3m for 18mm)
	Wet cup		$\mu = 406$ (sd=7.3m for 18mm)

*Protected with glue and specialist tape as per the installation recommendations.

AIRTIGHTNESS

SMARTPLY SURE STEP is certified by the Passive House Institute as an airtight product. The panel can be used as the airtight layer in floor or roof systems to provide a high performance, robust and durable solution. Associated with SMARTPLY PROPASSIV, an airtight sheathing panel for use in wall and ceilings, SMARTPLY sustainable airtight products can ensure that a high level of airtightness is achieved in all types of buildings and construction systems.

For the optimum performance and to ensure the targeted airtightness levels are achieved it is necessary to follow the installations steps detailed in the associated document “SURE STEP airtight installation guidance” and use specialist airtight tapes and primers (supplied by others) as recommended for all connections.

Visit the MEDITE SMARTPLY YouTube channel for detailed installation videos.

SMARTPLY®

SURE STEP

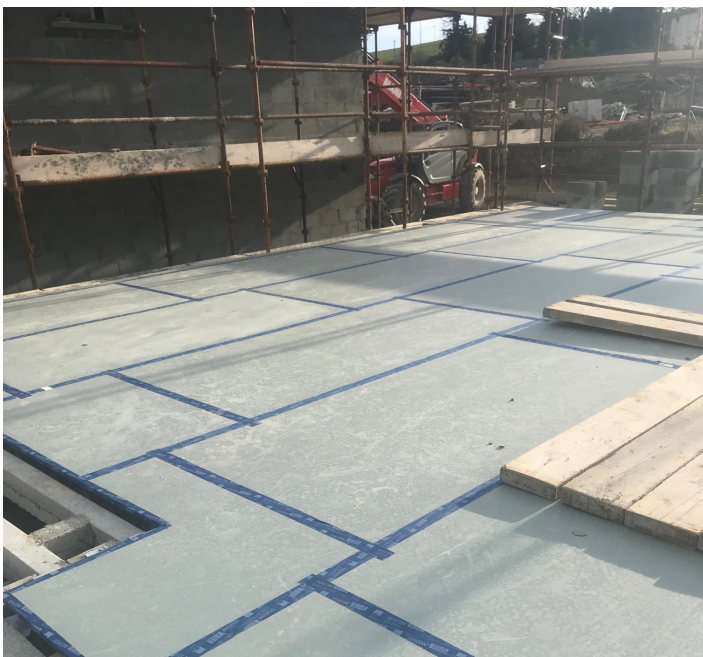
STANDARD INSTALLATION

SMARTPLY SURE STEP is a load bearing T&G panel and therefore installation recommendations should be followed strictly to get the best performance of the panel. Detailed guidelines regarding loadings, moisture content, fixings, expansion gaps, and use are provided in the SMARTPLY MAX, FLOOR and ROOF datasheets.

To perform as a floor system the panel needs to be protected at the T&G joint, cut and exposed edges as they are a weak area where water ingress can occur and cause swelling and cracking of the coating. SMARTPLY recommends that these areas are protected by using a specialised construction waterproof high-performance polyethylene-coated cloth tape and installed as detailed in the step by step instructions below:

Step by step installation with glue and tape:

1. Apply one continuous bead of D4 rated (EN 204) adhesive to the top of the joists and noggins corresponding to the area of the 1st panel to be installed.
2. Install the first panel following the recommended guidelines and best practices, including fixings centres and types (SMARTPLY MAX, SMARTPLY FLOOR, SMARTPLY ROOF). The fixings heads should be flush or just below the panel surface.
3. Apply one bead of D4 rated (EN 204) adhesive on both the tongue and groove of the joints about to be installed making sure that the entire joint is bonded.
4. The panels cut edges on top of the joists should be sealed and protected with a specialist waterproof high-performance polyethylene-coated cloth tape. This will prevent moisture ingress in the panel edge and edge swelling.
5. Continue installing the panels as required in a staggered pattern by repeating the fixing, gluing and taping steps for each panel.
6. All exposed edges should be sealed by applying a continuous layer of D4 rated (EN 204) adhesive by using a brush or by wrapping specialist waterproof high-performance polyethylene-coated cloth tape around the edges.
7. Any gaps in the joints and all fixing heads should be sealed by applying a bead/drop of D4 rated (EN 204) adhesive or by applying a small area of tape.
8. After any construction work has been completed the floor can be cleaned with a soft brush.



TRANSPORTATION, STORAGE & HANDLING

Careful transportation, storage and handling are important to maintain panels in their correct condition for use.

Precautions must be taken during storage, prior to delivery and on site to minimise changes in moisture content of the OSB panels due to weather. Panels must be stored on dry bases, and packs must be evenly supported on bearers with spacer sticks at regular intervals (depending on panel thickness but max 600 c/c).

Packs should be sheeted with tarpaulins or other impervious material so arranged to give full cover, but at the same time to permit free passage of air around and through the pack. Care must be taken not to deform stacked panels. Bands should be cut as soon as practical and safe to avoid permanently deforming the panels. During transport and handling it is particularly important to protect edges and corners with suitable coverings to prevent damage from chafing or slings. Where the panels are required to have low moisture contents, it might not be possible to maintain suitable conditions on site other than for short periods, and deliveries must be arranged accordingly.

SURFACE DAMAGE

The high performance and durable coating is designed to perform as a resistant flooring surface. However, in the event of extensive damage to the panel coated surface – exposing the OSB below the coating – during transport, storage handling or in use it is recommended to seal the damage with specialist waterproof high-performance polyethylene-coated cloth tape to prevent water ingress in the OSB and excessive surface swelling which could extend the damage.

QUALITY & ENVIRONMENTAL CERTIFICATION

SMARTPLY OSB is CE marked in accordance with the harmonised standard EN 13986: Wood-based panels for use in construction – characteristics, evaluation of conformity and marking. This standard is a technical specification for wood-based panels which implements the provisions of the Construction Products Regulation (CPR). SMARTPLY OSB is UKCA marked in accordance with the designated standard BS EN 13986.

SMARTPLY operates under an Integrated Management System (IMS) for Quality (ISO 9001), Environment (ISO 14001), Health and Safety (ISO 45001) and Energy (ISO 50001), which is certified by the National Standard Authority of Ireland (NSAI).

SMARTPLY has Forest Stewardship Council® (FSC®) Chain of Custody certification for its manufacturing, processing, sales and distribution processes.

SMARTPLY operates under an Integrated Pollution Prevention Control (IPPC) licence, which is monitored by the Environmental Protection Agency (EPA) in Ireland.



SMARTPLY® SURE STEP

SERVICE

For further information and/or technical advice please contact your local MEDITE SMARTPLY Sales Representative or SMARTPLY Technical Support Personnel through any of our European offices.

UK: +44 1322 424900

Ireland: +353 5 181 0205

France: +33 975189830

Netherlands: +31 858886230

Belgium: +32 28086256

As we continually update our technical datasheets, please check on www.mdfosb.com that you have the latest version.

This technical data sheet is provided for information purposes only and no liability or responsibility of any kind is accepted by SMARTPLY EUROPE DAC or their representatives. SMARTPLY EUROPE DAC have used reasonable efforts to verify the accuracy of any advice, recommendation or information. SMARTPLY EUROPE DAC reserves the right to alteration of its products, production information and range without notice.

IMPORTANT NOTES

The recommendations provided in this technical data sheet for the correct use of SMARTPLY SURE STEP are specifically designed to ensure longevity and performance of this quality product in service. It is therefore essential that these recommendations are strictly followed.

The product is designed to be installed by a competent general builder or contractor, experienced with this type of product, in strict accordance with the technical guidance provided in the relevant SMARTPLY product technical data sheets.

SMARTPLY EUROPE DAC cannot be held responsible for damages arising from non-adherence to these recommendations, or product failures resulting from inadequate structural design or misuse of this product.

In order to provide comprehensive guidance for the correct use of SMARTPLY SURE STEP, this technical datasheet makes reference to relevant BS and EN standards. SMARTPLY EUROPE DAC cannot be held responsible for claims arising from the use of any information that has been extracted from such sources.

